

# ASSET MISPRICING

Kurt F. Lewis  
Francis A. Longstaff  
Lubomir Petrasek

**Abstract.** We use a unique sample of corporate bonds guaranteed by the full faith and credit of the U.S. to test recent theories about why asset prices may diverge from fundamental values. A key feature of our study is access to proprietary data on the haircuts, funding costs, and inventory positions of the primary dealers making markets in the individual bonds. The results provide strong support for the cross-sectional implications of the safe-asset, intermediary-constraints, and search-frictions literatures. Furthermore, the results indicate that network topology may also play an important role in explaining mispricing.

**JEL Classification Codes:** G12, G18.

**Keywords:** Guaranteed Bonds, Safe Assets, Intermediary Constraints.

Current draft: April 2020.

Kurt F. Lewis is with the Federal Reserve Board of Governors. Francis A. Longstaff is with the UCLA Anderson School and the NBER. Lubomir Petrasek is with the Federal Reserve Board of Governors. We are grateful for the comments of Yakov Amihud, Daniel Barth, Dan Covitz, Robin Greenwood, Valentin Haddad, Yesol Huh, Sebastian Infante, Dan Li, Tyler Muir, Matthew Pritsker, Wei Xiong, and seminar participants at AQR Asset Management, The Federal Reserve Board, The Federal Reserve Bank of Chicago, The Office of Financial Research, New York University, UCLA, and the 2018 American Finance Association Meetings. We thank Jessica Goldenring for excellent research assistance. All errors are our responsibility. The analysis and conclusions set forth are those of the authors and do not indicate concurrence by other members of the research staff or the Federal Reserve Board.

## 1. INTRODUCTION

One of the central doctrines of modern financial theory is that the price of a security should equal the present value of its cash flows. Recently, however, this paradigm has been challenged by evidence of asset prices that appear to diverge from their fundamental values, particularly during financial crises and major market events.

A number of important recent studies examine the time series properties of these apparent violations of the law of one price in financial markets. One stream of this literature focuses on the convenience yield incorporated into near-money assets such as Treasury securities. Key examples include Longstaff (2004), Krishnamurthy and Vissing-Jorgensen (2012), and Nagel (2016). Another stream focuses on the role that intermediary balance sheet constraints may play in asset pricing. An important recent example is Du, Tepper, and Verdelhan (2018) who show that covered interest rate parity (CIP) violations are directly related to the proximity to the end of a quarter.

This paper extends the literature in a new direction by studying the cross-sectional variation in mispricing within an asset class. In this study, we use a unique data set of corporate bonds explicitly guaranteed by the full faith and credit of the United States to shed light on the factors at play in allowing asset mispricing to occur. A key advantage of this data set is that since these bonds have the same credit risk as Treasury bonds, deviations from fundamental values can be observed directly by contrasting their prices with those of comparable Treasury bonds. We also have proprietary data on the funding costs, haircuts, and inventory positions of the individual primary dealers making markets in each bond, as well as data on the trading activity and network topology of each bond. Thus, this panel data set is ideally suited for exploring the cross-sectional implications of a number of recent theoretical models of asset mispricing.

We find that there is significant and persistent mispricing among the guaranteed corporate bonds in the data set during the 2008–2012 sample period. The

overall average value of the mispricing during the sample period is 20.07 basis points which is highly significant both statistically and economically. We also show that there is dramatic variation in the amount of mispricing over time as well as across bonds. We note that the pattern of correlations in mispricing across bonds is unlikely to be explained by a single factor.

We begin the analysis by considering the cross-sectional implications of the various classes of theoretical models in the literature. In particular, we consider the cross-sectional implications of the Treasuries-as-money, intermediary-constraints, search-frictions, and microstructure-related literatures. This task is made somewhat challenging by the fact that a number of the theoretical models are developed in settings with only one asset and/or a single representative intermediary. Thus, in a strict sense, some models in their current format may only have meaningful implications for the time series properties of mispricing.<sup>1</sup>

The empirical results provide a number of important insights into the underlying reasons and economic mechanisms allowing persistent mispricing to occur in this market. First, we find that mispricing is strongly related to the duration of the matching Treasury bond used in the estimation. This result is consistent with Krishnamurthy and Vissing-Jorgensen (2012) who present a model in which the near-money convenience yield in Treasury securities can vary across maturities. Second, we find that mispricing is significantly related to the CDS spreads and haircuts of the primary dealers making markets in the bonds. These results support the implications of many current intermediary-based models of asset pricing. Third, we show that the structure of the dealer/customer network is related to mispricing in ways consistent with a number of recent theoretical network models. Finally, we find little evidence that traditional liquidity measures such as bid-ask spreads are related to mispricing in our sample.

Having found support for the Treasuries-as-money, intermediary-constraints, and search-friction theories, we conduct a number of additional tests to examine whether the patterns of mispricing are consistent with the underlying mechanisms

---

<sup>1</sup>We are grateful to the referee for this insight.

of each model. First, we test whether the term structure of mispricing is linked to the convenience yield in Treasury securities. The results provide strong additional support for the Treasuries-as-money literature (2012). In particular, we find that it is the interaction of measures of the near-money premium in Treasuries with duration—and not duration itself—that best explains the term structure of mispricing.

Second, we test whether the relation between mispricing and dealer CDS spreads and haircuts operates through an inventory channel as implied by many current intermediary asset pricing theories. In particular, models such as Brunermeier and Pedersen (2009), Gârleanu and Pedersen (2011), He and Krishnamurthy (2012, 2013), and others share a common underlying economic mechanism: an adverse shock to the capital and/or funding capacity of a financial intermediary reduces its risk-bearing ability which, in turn, leads to reductions in its security positions and a corresponding increase in mispricing. We find support for both parts of this economic mechanism. Increases in dealer CDS spreads and haircuts are both followed by significant declines in dealer inventory positions. In turn, an instrumental variables analysis shows that declines in dealer inventory are significantly related to increases in mispricing. The results also indicate, however, that shocks to dealer CDS spreads and haircuts may not operate exclusively through the inventory channel—that intermediary constraints may have broader effects than current models suggest.

To examine the implications of the intermediary-constraints literature at a more fundamental causal level, we study the impact of two separate events that resulted in major exogenous shocks to the amount of capital available to dealers, the access of dealers to funding for their inventory positions, and to the liquidity of the bonds. One of these occurred in April 2009 after the Fixed Income Clearing Corporation (FICC) announced that the guaranteed bonds would be eligible for the GCF Repo market. This event represented a major positive funding shock for dealers who now faced lower effective haircuts in financing inventory positions via the repo market. We show that the cross-sectional patterns of changes in mispricing following this event are directly related to the funding and capital

costs faced by dealers.

The other event is the announcement of the financial stress tests (the Supervisory Capital Assessment Program (SCAP)) for major dealers in the market in February 2009. This resulted in a significant decline in the market value of the impacted dealers on the day of announcement, representing a large exogenous negative shock to their capitalization. We again find that the cross-section of changes in mispricing is directly related to the differences in the size of the negative capital shock suffered by dealers on the announcement date.

Third, one of the central implications of the search-frictions/network-structure literature such as Duffie, Gârleanu, and Pedersen (2005, 2007), Duffie (2010), Babus and Hu (2017), Üslü (2019), and others is that mispricing is more likely in networks in which the meeting rate of participants is lower. We find strong empirical support for this hypothesis. Specifically, using an instrumental variables approach, we find that an increase in the frequency at which participants meet and trade is associated with a significant decline in mispricing.

In summary, this paper contributes to the literature in three important ways. First, by being among the first papers to focus on the cross-section of mispricing, we are able to test the implications of current theoretical models in ways not possible using only time series data. Second, the results indicate that there are multiple sources for asset mispricing—no single theory completely explains the cross-sectional patterns of mispricing observed in the data. In particular, we find strong empirical support for the implications of both the intermediary-constraints and the search-frictions/network-structure literatures. Furthermore, we also find evidence that the convenience yield incorporated into Treasury securities plays a significant role in accounting for the apparent mispricing of guaranteed corporate bonds relative to Treasuries. Finally, our results suggest a number of possible new directions for future theoretical models. In particular, the results highlight the need for models that allow for intermediary heterogeneity across assets as well as for theoretical frameworks in which balance sheet constraints may impact asset pricing in ways other than through the traditional inventory channel.

## 2. CROSS-SECTIONAL IMPLICATIONS OF THE LITERATURE

In this section, we summarize some of the broad themes that appear in the theoretical literature on asset mispricing, and consider the potential implications of these themes for the cross-sectional characteristics of mispricing.

### 2.1 Treasuries as Money

An important recent literature highlights the unique safe-asset or near-money characteristics of Treasury securities—we denote this as the Treasuries-as-money literature. Longstaff (2004), Krishnamurthy and Vissing-Jorgensen (2012), Nagel (2016), and others show that Treasury securities trade at premium prices relative to other securities with similar credit risk and liquidity features. As discussed by Krishnamurthy and Vissing-Jorgensen (2012), this premium may reflect the store-of-value or medium-of-exchange role that Treasury securities can play during flights to safety in the financial markets.

Krishnamurthy and Vissing-Jorgensen (2012) use a framework in which agents derive utility from holding a convenience asset to model the near-money premium in Treasury securities. A key insight of their model is that the near-money premium may vary across Treasury bonds with different levels of price risk. Recall that the price risk of a Treasury bond is directly related to its maturity or duration. While Krishnamurthy and Vissing-Jorgensen (2012) do not provide specific predictions about the relation between duration and the safety/liquidity premium, they do make the important point that these premia may differ between less-risky short-term assets and riskier long-term assets. In particular, they state that “our specification emphasizes that the safety attributes may differ across short- and long-term assets and thus lead to differences in convenience value in long-term assets relative to short-term assets.” Thus, a natural implication of their model is that there may be some type of term structure to the near-money premia in Treasury securities.<sup>2</sup> We note also that this implication is also consis-

---

<sup>2</sup>Other research documenting that some Treasury securities trade at a premium

tent with classic limits-to-arbitrage theory. In particular, limits to arbitrage are more likely to bind for riskier securities. In turn, this suggests the possibility of a cross-sectional relation between the duration of Treasury securities and the size of the near-money premium incorporated into their prices. Since we estimate mispricing from the difference between the prices of Treasury-guaranteed corporate bonds and matched-maturity Treasury bonds, this suggests the following:

**Cross-Sectional Implication 1:**

*Mispricing is positively related to the price risk of the matched-maturity Treasury security.*

## **2.2 Intermediary Balance Sheet Constraints**

A rapidly-growing literature addresses the relation between asset prices and balance sheet constraints faced by financial intermediaries. One stream of this literature focuses specifically on the effect of equity or capital constraints on asset pricing. Important examples include Xiong (2001), Kyle and Xiong (2001), He and Krishnamurthy (2012, 2013), Brunnermeier and Sannikov (2014), He, Kelly, and Manela (2017), and Kondor and Vayanos (2019). Although differing in details, these models share a common underlying economic mechanism: an adverse shock to the capital of a financial intermediary reduces its risk-bearing capacity which, in turn, leads to reductions in their security positions and a corresponding increase in mispricing.

A second stream of the literature focuses on the effects of the margin or leverage constraints faced by a financial intermediary on asset pricing. Key examples include Gromb and Vayanos (2002), Brunnermeier and Pedersen (2009), Gârleanu and Pedersen (2011), Adrien, Etula, and Muir (2014), and Morelli,

---

relative to others includes Amihud and Mendelson (1991), Kamara (1994), Duffee (1996), Krishnamurthy (2002), Fleckenstein, Longstaff, and Lustig (2014), and Fleckenstein and Longstaff (2019).

Ottonello, and Perez (2019). The common economic mechanism in these models is that an adverse shock to the ability of intermediaries to fund leveraged security positions again reduces their risk-bearing capacity, which is then followed by declines in their holdings of securities and an increase in the mispricing of assets.

One challenge we face in identifying the implications of this literature for the cross-section of mispricing is that most of the models are developed in settings with only one asset and/or a single representative intermediary. Thus, these models may only have meaningful implications for the time series properties of mispricing. For example, applying Brunnermeier and Pedersen (2009) or Gârleanu and Pedersen (2011) to the market we study implies that mispricing should literally be constant across bonds.<sup>3</sup> Motivated by the spirit of this literature, however, we take the broader interpretation that intermediary balance sheet constraints could still be relevant if these models were extended to more-realistic settings allowing for heterogeneity in intermediaries across assets. For example, this type of heterogeneity could occur endogenously in models of network formation in which intermediaries choose to specialize on the basis of asset-specific characteristics. Alternatively, this type of fragmentation could occur if intermediaries faced exogenous frictions that limited their ability to make markets across all securities in an asset class. These considerations suggest the following patterns for mispricing across assets:

## **Cross-Sectional Implication 2:**

*Mispricing is larger for assets whose primary intermediaries face*

- *higher capital costs,*
- *higher margins.*

---

<sup>3</sup>This follows since the intermediary—who faces the same tri-party repo margin across all guaranteed corporate bonds in this market—equilibrates the ratio of mispricing to margin across all bonds in these models.



## 2.3 Search Frictions and Network Structure

Another important literature focuses on the microstructure of decentralized markets such as those in which the guaranteed bonds we study trade. There are at least three major streams of this literature.

First, an important recent stream focuses on the role of search frictions in financial markets. Important examples include Wolinsky (1990), Duffie, Gârleanu, and Pedersen (2005, 2007), Vayanos and Wang (2007), Weill (2007), Vayanos and Weill (2008), Duffie and Strulovici (2012), and Duffie, Malamud, and Manso (2015). In these types of models, trading occurs as investors search for intermediation in opaque over-the-counter markets. In many of these models, intermediation occurs through the random pairwise matching of market participants. As a result, the meeting rate of network participants becomes a critical asset pricing factor. For example, in Duffie (2010), “the size of the immediate price reaction and the halflife of its reversal are decreasing in the mean rate at which investors locate suitable counterparties.”

Second, another stream considers the impact of network structure as investors search for intermediation in financial markets. Important recent examples of this rapidly-growing literature include Atkinson, Eisfeldt, and Weill (2015), Babus (2016), Di Maggio, Kermani, and Song (2017), Babus and Hu (2017), Farboodi (2017), Babus and Kondor (2018), Sambalaibat (2018), Afonso and Lagos (2019), Neklyudov (2019), Üslü (2019), Eisfeldt, Herskovic, Rajan, and Siriwardane (2019), and many others. While few of these models focus exclusively on asset pricing, a number of them suggest that specific network features may be related to equilibrium prices. One such feature is the interconnectivity of dealers at the center of a core-periphery network. For example, Sambalaibat (2018) uses a directed-search model of network formation to show that dealer interconnectiveness results in higher dealer volume, improves bond market liquidity, and alleviates misallocations. Another feature is network centrality. In particular, the results in Babus and Hu (2017), Üslü (2019) and Eisfeldt, Herskovic, Rajan, and Siriwardane (2019) suggest that deviations from fair value may

be related to the concentration of dealer positions at the core of the network. We note, however, that the sign of the effect of changes in dealer centrality varies across models in the current literature.<sup>4</sup> Finally, a number of models share the implication that the core of the network consists of a set of investors who function as intermediaries because they experience higher meeting rates (for either endogenous or exogenous reasons) than investors in the periphery. Key examples include Farboodi, Jarosch, and Shimer (2018) and Üslü (2019). In these types of models, equilibrium prices may depend on the size of the core relative to that of the periphery (for example, the number of dealers vs. the number of customers or the ratio of dealer trading volume to customer trading volume). Although current network models are typically developed in a single-asset setting, we again hypothesize that they could be embedded in broader settings in which heterogeneity in network structure could potentially help explain differences in mispricing across assets.

A third stream focuses on the role of slow-moving capital in asset pricing. Key examples of this literature include Pagano (1989), Caballero (1995), Lynch (1996), Gabaix and Laibson (2001), Mitchell, Pedersen, and Pulvino (2007), and Chien, Cole, and Lustig (2012). Another important example is Duffie (2010) who presents a model in which intermediaries trade every period, but some fraction of their customers are inattentive over an extended period after trading. When supply or demand shocks occur, the resulting limited depth of the market requires price concessions to obtain immediacy. These price concessions are gradually reversed over time as inattentive customers eventually return to the market. One implication of this framework is that mispricing may be larger during periods characterized by low levels of customer trading activity.

The key implications of the various streams of this literature can be summarized as follows:

---

<sup>4</sup>For example, Li and Schürhoff (2019) state: “By contrast, network-based models show that trading costs depend on dealer centrality. Predictions of a centrality premium or discount, however, are ambiguous in both types of models . . .”

### **Cross-Sectional Implication 3:**

*Mispricing is larger for assets with*

- *longer search times/lower meeting rates,*
- *networks with either higher or lower dealer concentration,*
- *lower relative customer trading activity.*

## **2.4 Liquidity Models**

Finally, there is extensive literature considering the impact of transaction costs and illiquidity on security prices. In these models, investors may face significant trading costs or other types of illiquidity which prevent them from arbitraging away mispricing. Examples of research focusing on the implications of transaction costs and illiquidity for asset prices include Demsetz (1968), Amihud and Mendelson (1986), Boudoukh and Whitelaw (1993), Vayanos (1998), Vayanos and Vila (1999), Acharya and Pedersen (2005), Amihud, Mendelson, and Pedersen (2005), Huang and Wang (2009, 2010), and Chen, Cui, He, and Milbradt (2018). This literature suggests the following:

### **Cross-Sectional Implication 4:**

*Mispricing is larger for assets with higher transaction costs/lower liquidity.*

## **3. THE FDIC DEBT GUARANTEE PROGRAM**

Our approach to identifying asset mispricing is to compare the yields on corporate bonds that are explicitly guaranteed by the full faith and credit of the United States with those of comparable U.S. Treasury bonds. This approach closely parallels Longstaff (2004) who studied the relative pricing of Refcorp and U.S. Treasury bonds.

In particular, we focus on the pricing of corporate bonds that were issued

under a debt guarantee program administered by the Federal Deposit Insurance Corporation (FDIC). In the wake of the failure of Lehman Brothers, and as part of a coordinated response within the U.S. Government to prevent what was described as the possible collapse of credit markets, the FDIC introduced the Temporary Liquidity Guarantee Program (TLGP) on October 14, 2008. This program consisted of two parts: the Transaction Account Guarantee Program which involved an FDIC guarantee in full of all non-interest-bearing accounts, and the Debt Guarantee Program which involved a guarantee of certain newly-issued unsecured debt. The bonds we consider were issued as part of the Debt Guarantee Program.

The goal of the Debt Guarantee Program was to allow institutions to roll over senior unsecured debt by issuing new debt in their own name, backed by a government guarantee. The program provided a guarantee for debt issued by FDIC-insured depository institutions as well as their parent bank holding companies.<sup>5</sup> The guarantee was for newly-issued debt only, and (ultimately) that debt needed to be issued before the end of October 2009; the guarantee expired on December 31, 2012.<sup>6</sup>

U.S. Treasury bonds are guaranteed by the full faith and credit of the United States. It is important to note that the FDIC guarantee under the Debt Guarantee Program is also explicitly backed by the full faith and credit of the United States. Specifically, the FDIC's Final Rule issued in November 2008, states that the FDIC's guarantee of qualifying credit debt under the Debt Guarantee Program is subject to the full faith and credit of the United States pursuant to Section 15(d) of the Federal Deposit Insurance (FDI) Act, 12 U.S.C. 1825(d).<sup>7</sup>

---

<sup>5</sup>Savings and loan corporations with certain business models and other financial entities were also allowed to participate subject to case-by-case approval.

<sup>6</sup>Both the issuance window and the end of the guarantee given here are the result of deadline extensions that occurred in 2009. For a more detailed discussion of the program, its initial terms and subsequent evolution, see <https://www.fdic.gov/regulations/resources/tlgp/archive.html>.

<sup>7</sup>The Appendix provides additional details about the FDIC guarantee including

In fact, the Master Agreement for the Debt Guarantee Program contains the requirement that the following text be included, exactly as written, in each security issued under the program:

*The parties to this Agreement acknowledge that the Issuer has not opted out of the debt guarantee program (the “Debt Guarantee Program”) established by the Federal Deposit Insurance Corporation (“FDIC”) under its Temporary Liquidity Guarantee Program. As a result, this debt is guaranteed under the FDIC Temporary Liquidity Guarantee Program and is backed by the full faith and credit of the United States. The details of the FDIC guarantee are provided in the FDIC’s regulations, 12 CFR Part 370, and at the FDIC’s website, [www.fdic.gov/tlgp](http://www.fdic.gov/tlgp). The expiration date of the FDIC’s guarantee is the earlier of the maturity date of this debt or June 30, 2012.*

Furthermore, the Master Agreement is explicit that bondholders receive timely payment of principal and interest even if a default occurs. In particular, Section 370.12 of the Final Rule states:

*Upon the occurrence of a payment default, the FDIC shall satisfy its guarantee obligation by making scheduled payments of principal and interest pursuant to the terms of the debt instrument through maturity (without regard to default or penalty provisions).*

Thus, for the lifetime of the guarantee program, payments will continue as scheduled regardless of the default of the issuer—the timing of principal and interest cash flows is guaranteed to be unaffected by a default.<sup>8</sup> The guarantee is not only for the bond’s principal; the full schedule of cash flows from the bond itself is guaranteed.

---

the legislative background establishing its full faith and credit nature.

<sup>8</sup>Though allowed by the Debt Guarantee Program, no one issued debt under the program for longer than the guarantee period, so this guarantee was applicable through the full lifetime of all of the bonds used in our study.

Finally, we observe that the explicit full faith and credit guarantee of corporate debt issued under the FDIC program was honored ex post. In particular, the FDIC reported in its summary of the Temporary Liquidity Guarantee Program that it fully covered the losses suffered by debtholders from the defaults by six financial institutions that participated in the program. The total amount of the defaulted principal and interest payments covered by the FDIC was \$153 million.<sup>9</sup>

## 4. THE DATA

Our objective is to examine the asset pricing implications of the literature using the cross-section of these guaranteed corporate bonds. A unique feature of our study is the availability of several proprietary data sets that provide us direct measures of key variables including the inventory positions and margins of individual dealers in the market.<sup>10</sup>

### 4.1 The Transactions Data

We were given access to a confidential version of the Trade Reporting and Compliance Engine (TRACE) database. This database contains all over-the-counter trades in publicly traded U.S. corporate bonds, including those issued under the Debt Guarantee Program. This version differs from the public version of TRACE in that it explicitly identifies the dealers involved in each transaction and includes the actual size of each transaction.<sup>11</sup> An important advantage of this is that we

---

<sup>9</sup>The six defaulting institutions (and the par amount of defaulted debt) were Integra Bank (\$51 million), Bradford Mid-Tier Company (\$2 million), Coastal Community Bank (\$3.8 million), Washington First Financial Group (\$34.4 million), the Park Avenue Bank (\$20 million), and Superior Bank (\$40 million).

<sup>10</sup>The Appendix and Internet Appendix provide additional details about how the variables are constructed as well as the data sets.

<sup>11</sup>In contrast, the public version of TRACE data used in most other studies is subject to a dissemination cap of \$5 million per transaction, and all transactions

can infer directly the inventory holdings of each dealer in the market for each of the bonds in the sample. Furthermore, the TRACE data set also includes an indicator for whether the transaction is between a dealer and another dealer, or between a dealer and a customer. This allows us to identify both total customer trading volume and total interdealer trading volume (which we denote simply as dealer trading volume) for each of the bonds in the sample.

## **4.2 Corporate Bond Data**

The sample of guaranteed corporate bonds consists of 63 fixed coupon bonds issued under the Debt Guarantee Program of the FDIC and publicly traded during the sample period from December 2008 to December 2012. As required by the terms of the program, all of the bonds have fixed principal and bullet maturity terms, are senior in the capital structure, and have no special features such as call, put, sinking fund, or conversion provisions. The data source for bond characteristics such as the bond type, issue date, outstanding amount, maturity, and coupon rate is the Fixed Income Securities Database (FISD). We limit the sample to bonds that make fixed, semi-annual coupon payments and have at least 180 days to maturity, and thus the data used in the study concludes with trades occurring on June 28, 2012. The data on secondary-market transactions and prices of these bonds are from the confidential version of TRACE described above. We compute the closing transaction price for each trading day based on institutional-sized trades with a volume of at least \$100,000. These trades account for more than 98 percent of the total trading volume.

## **4.3 Dealer Capital Constraints**

To measure dealer capital costs, we focus on the credit default swap (CDS) spreads of a set of 12 dealers who represent the main intermediaries in our sample. We designate these dealers as the primary dealers. Each of these dealers was the largest inventory holder for at least one of the sample bonds at some point during the sample period. These primary dealers account for 82 percent of the total

---

in excess of \$5 million are disseminated as “\$5MM+”.

inventory holdings for the bonds in the sample. They are also major participants in the tri-party repo market. The dealer CDS spread is used as a measure of intermediary capital constraints in a number of other studies including Gilchrist and Zakrajsek (2012) and Copeland, Martin, and Walker (2014). We obtain daily market prices for five-year CDS contracts for the primary dealers. The source of the CDS data is Markit.

It is important to recognize that CDS spreads are based on the total financial risk of the dealers. For the primary dealers in our sample, however, the amount of guaranteed bonds held in inventory represents only a tiny fraction of their total balance sheet. For example, Federal Reserve Weekly Reports of Dealer Positions (FR 2004A) indicate that dealers' inventory holdings of guaranteed bonds during the sample period represented only 1.5 percent of their total holdings of bonds. Thus, primary dealer CDS spreads should be free from reverse causation effects from mispricing since any mispricing of the guaranteed bonds would not have any material impact on the financial position of the dealer.

#### **4.4 Dealer Margins**

We also have access to a confidential data set from the Federal Reserve Bank of New York that identifies the margin or haircut that each dealer must pay to obtain repo financing for corporate bonds. This data set consists of disaggregated data on haircuts for corporate bond collateral posted by individual dealers in the tri-party repo market. We note that the tri-party repo market is a major source of funding for the inventory holdings of large dealers. Later in the paper, we also consider the role of an alternative source of funding for dealer inventory holdings, namely the General Collateral Finance (GCF) Repo service of the FICC.

An important feature of the tri-party repo market is that the haircut for an individual dealer is determined at the asset class level—in this case, the corporate bond asset class—rather than at the individual bond level. This means that a dealer financing inventory in the tri-party repo market faces the same haircut for all corporate bonds—the haircut is not specific to the guaranteed bonds in the sample. Because of this, the haircuts faced by individual dealers in this market



should also be free of reverse causation effects from mispricing since a dealer’s guaranteed bond holdings represent only a small fraction of the dealer’s total corporate bond portfolio.<sup>12</sup>

#### 4.5 Network Measures

The inventory and trading volume data obtained from the confidential TRACE data set also provides us with the ability to identify a number of key measures for the networks in which the individual guaranteed bonds trade. For example, we identify the number of dealers in the network for a specific bond by simply counting the number of dealers holding inventory positions in that bond. Similarly, knowing the inventory held by each dealer in a network allows us to estimate dealer centrality or concentration measures for that network. In particular, we calculate the dealer centrality measure as the ratio of the total inventory held by the primary dealer for a bond to the total inventory held by the set of the 12 primary dealers for the bond. This ratio provides a measure of the degree of concentration within the core of the network. Having dealer and customer trading volume data for each bond also allows us to measure the relative amount of trading activity involving the core and periphery of the network. Specifically, we compute the dealer share of trading volume as the ratio of total dealer trading volume to total trading volume. This ratio provides a measure of the relative activity of the core versus the periphery of the network. Alternatively, this ratio can also be viewed as a measure of the length of the intermediation chain because more interdealer trading activity may imply that the bond passes through several dealers before it ultimately reaches the customer. Finally, we collect data on the total number of institutions that hold positions in the individual guaranteed bonds from the eMAXX database. This data source provides quarterly measures of the amount of each bond in the sample that is held by institutions such as insurance companies, mutual funds, public pension funds, endowment funds, and

---

<sup>12</sup>For example, over the sample period, the set of all 63 guaranteed bonds in the sample accounts for only 4.3 percent of the total corporate bond trading volume reported in TRACE.

foundations.

## 4.6 Liquidity Measures

We use a number of metrics to measure bond liquidity. First, we include the daily effective bid-ask spread as a direct measure of transaction costs for each bond. The effective bid-ask spread is estimated from the individual transactions in the confidential TRACE data set. Second, we also estimate the Amihud (2002) measure using the individual transactions in the confidential TRACE data set. Finally, we include standard measures of bond liquidity used in the literature such as the age of the bonds as well as the total notional amount of the bond outstanding.<sup>13</sup>

## 4.7 Descriptive Statistics

Table 1 provides summary statistics for guaranteed bonds in the sample including a number of dealer-related variables used throughout the paper. The first three of these variables—dealer CDS, dealer margin, and dealer inventory—are based on the set of 12 primary dealers as described above. In particular, the dealer CDS and dealer haircut measures used in the study are the inventory-weighted average CDS spreads and haircuts for the set of primary dealers holding inventory positions in a specific bond, where the weights are based on the total inventory held by the set of primary dealers at the end of the previous month. Similarly, dealer inventory is defined as the percentage of the total bond issue held by the set of primary dealers. In contrast, the number of dealers is defined as the total number of dealers who transact in a specific bond (not just those in the set of primary dealers). Likewise, trading volume is based on the transactions of all dealers and customers (trading volume variables are normalized by the size of the bond issue unless otherwise specified).

Figure 1 plots the cross-sectional distributions of dealer CDS spreads, margins, and inventory throughout the sample period. As shown, there is considerable cross-sectional variation across bonds in terms of the CDS spreads, margins,

---

<sup>13</sup>The liquidity measures are described in more detail in the Internet Appendix.

and inventory positions of the primary dealers for those bonds. Figure 2 plots the average inventory holdings for the individual bonds for the top eight primary dealers (the plots for the other four smaller primary dealers are similar to those shown). As illustrated, there is significant heterogeneity across dealers in terms of their inventory holdings for individual bonds—different dealers appear to specialize in different bonds. This feature is important since it is this heterogeneity that will allow us to identify dealer effects in the cross-section. The distribution of dealer inventory holdings in Figure 2 also suggests that the networks for these guaranteed bonds display a core-periphery structure similar to that observed in other markets.<sup>14</sup> Finally, Figure 3 plots the cross-sectional distribution of the number of dealers, the number of institutional investors, and the trading frequencies for the individual bonds throughout the sample period.

## 5. MISPRICING OF GUARANTEED CORPORATE BONDS

We use a simple two-step procedure to identify mispricing. First, we take the difference between the yield on a guaranteed corporate bond and the yield on a matching Treasury bond with the identical coupon rate and maturity date. The yield on a guaranteed corporate bond for a given day is based on the final transaction price for that bond on that day. We note that the TLGP bond markets are relatively liquid and that 73.4 percent of the final transaction prices occur after 3:30 PM ET, while 83.4 percent occur after 2:30 PM ET. To determine the yields for these matching Treasury bonds, we use the daily spot curve constructed from off-the-run, fixed coupon Treasury securities with residual maturities of 90 days or more. The zero coupon Treasury curve is generated using the functional form proposed by Nelson and Siegel (1987) as extended by Svensson (1994) and is based on market prices observed at 3:30 PM ET. Thus, there should be relatively little mismatch in the timing of the TLGP and Treasury yields used to estimate mispricing. Furthermore, even if slight timing differences

---

<sup>14</sup>For example, see Duffie, Scheicher, and Vuillemeys (2015), Hollifield, Neklyudov, and Spatt (2017), and Li and Schürhoff (2019).

introduce some noise into our estimates of mispricing, they are unlikely to bias those estimates. A detailed description of the estimation methodology used to measure the zero coupon Treasury curve is given in Gurkaynak, Sack, and Wright (2006). From the fitted Treasury spot curve, we calculate the price of a Treasury bond with the same coupon and maturity as the corporate bond and determine the yield spread. We compute the yield spread for each bond for each day in the sample period and provide descriptive statistics and further details in the remainder of this section. For analyses in later sections where some data are only available at the monthly frequency, we use the yield spread observed on the last trading day of the month as the monthly estimate of mispricing.

Second, we make a small adjustment to the yield spread due to the difference in the state income taxation of corporate and Treasury bonds. As discussed in Elton, Gruber, Agrawal, and Mann (2001), corporate bonds are subject to state income taxation while Treasury bonds are not. The Appendix shows that the state income tax effect on the yield spread is simply  $c \tau_s (1 - \tau)$ , where  $c$  is the coupon rate,  $\tau_s$  is the marginal state income tax rate, and  $\tau$  is the marginal federal income tax rate. The Appendix also shows that the state income tax effect can be identified from a cross-sectional regression of yield spreads on coupon rates. The resulting estimate of  $\tau_s(1 - \tau)$  is 1.655 percent. We control for the state income tax effect by subtracting 0.01655 times the coupon rate of the bond from the yield spread. Because of the low coupon rates of the bonds, the average size of the state income tax effect is small, just 3.8 basis points.

Table 2 provides summary statistics for the mispricing of each of the bonds in the sample. The average mispricing is positive and highly statistically significant for all 63 bonds in the sample. The average mispricing across all bonds is 20.07 basis points. The median mispricing across all bonds is 14.07 basis points. Furthermore, 91.72 percent of all mispricing estimates are positive. These results provide strong evidence that guaranteed bonds with the same cash flows as Treasury securities traded at a significant spread to Treasuries during most of the sample period—a clear violation of the law of one price. These results are consistent with previous empirical research in the literature documenting

that essentially riskless securities often trade at a spread relative to Treasury securities.<sup>15</sup>

Figure 4 plots the time series of mispricing estimates for all the bonds in the sample. As shown, there is considerable variation in mispricing over time. Mispricing often exceeds 100 basis points during early 2009, but then shows a declining trend during most of the sample period. By the end of the sample period, mispricing generally appears to converge to near zero. A notable feature of the data, however, is the large dispersion of mispricing across bonds at any given point in time. During much of the sample period, the cross-sectional standard deviation of mispricing is in the range of 20 to 30 basis points. Even near the end of the sample period when average mispricing has converged to nearly zero, we still see evidence of significant cross-sectional dispersion in mispricing estimates for individual bonds.

To provide additional perspective on this cross-sectional dispersion, we compute pairwise correlations for mispricing of the bonds in the sample. In particular, we compute the correlation between the levels of mispricing for all pairs of bonds for which there are at least 20 days with data for both bonds during the sample period. This results in a set of 1,811 pairwise correlations. The average pairwise correlation is 73.19 percent. These results indicate that while there is a strong common dimension to mispricing, mispricing is unlikely to be fully explained by a single common factor. Thus, there is significant cross-sectional variation in mispricing that needs to be explored.<sup>16</sup>

---

<sup>15</sup>For example, see Longstaff (2004) (guaranteed Refcorp bonds), Krishnamurthy and Vissing-Jorgensen (2012) (commercial paper), Nagel (2016) (repo loans), Nagel (2016) and Anderson, Du, and Schlusche (2019) (interest on excess reserves), and Frame, Fuster, Tracy, and Vickrey (2015) (agency debt).

<sup>16</sup>The Internet Appendix provides a number of additional results about the cross-sectional pattern of mispricing across bonds. For example, the Internet Appendix shows that the first principal component captures only 57.10 percent of the variation in mispricing across bonds.

## 6. THE PANEL REGRESSION TESTS

We turn next to testing the cross-sectional implications of the alternative models in the literature. In particular, we estimate a panel regression in which we regress mispricing on various measures of the price risk, intermediary balance sheet constraints, network structure, and liquidity of the bonds in the sample. In this panel regression, we include only explanatory variables that are unlikely to experience reverse causation effects from mispricing. In subsequent sections, however, we will also explore the relation between mispricing and potentially endogenous measures such as inventory and trading activity using instrumental variables techniques. Since most of our explanatory variables are observed monthly, we conduct this analysis at a monthly frequency using the mispricing observed on the last trading day of the month as the dependent variable. Thus, the basic observational unit in this analysis is bond-month. We note, however, that with much more granular intramonth data for the explanatory variables (e.g. institutional holdings, haircuts, etc.) it might also become possible to conduct the analysis at the bond-dealer-transaction level. Given the limitations of our data set, however, this extension must be left to future research.

In this panel regression, we include several controls for bond-specific characteristics. First, we include the coupon rate of the bond as a control for any residual marginal state income tax effects. Second, as discussed earlier, the credit risk of the issuer should not affect the pricing of the bond given the full faith and credit guarantee by the U.S. We include the CDS spread of the issuer, however, as a control for the possibility that investors may still believe that issuer credit remains a factor. Finally, since the panel regression is estimated in levels, we include monthly fixed effects to control for trends in the data. We note that the inclusion of monthly fixed effects also allows us to control for the potential effects of omitted common factors that may jointly impact mispricing and explanatory variables in the panel regression. In particular, while we have done our best to identify the key factors identified in the theoretical literature as driving mispricing, it is always possible that there are omitted factors. If so, and if these factors

affect mispricing and explanatory variables in a purely time series way, then the monthly fixed effects should control for the effects of these excluded variables.<sup>17</sup>

To test the cross-sectional implications of the Treasuries-as-money literature, we require a measure of the price risk of the matching Treasury bonds used in estimating mispricing. Following standard practice in fixed income markets, we use the Macauley duration of the bond as the measure of its price risk.

To test the cross-sectional implications of the intermediary balance sheet constraints literature, we need measures of the balance sheet constraints facing the primary dealers holding positions in the guaranteed bonds. As a measure of the capital costs faced by these dealers, we use the inventory-weighted average of the CDS spreads for the primary dealers, where the inventory weights are determined at the end of the previous month. Similarly, as a measure of the leverage constraints faced by these dealers, we use the inventory-weighted average of the tri-party repo haircuts for the primary dealers.

To examine the relation between mispricing and network structure, we include several network measures in the panel regression. First, we include the number of dealers and the number of institutional investors holding positions in the individual bonds as of the end of the prior month. These variables provide measures of the relative sizes of the core and the periphery of the networks in which individual guaranteed bonds trade. Second, we include the ratio of the inventory held by the primary dealer to the total inventory held by all dealers as a measure of the degree of concentration in the core of the network. Third, we

---

<sup>17</sup>We acknowledge, however, that we are implicitly relying on the assumption that, if these omitted common factors also impact the cross-sectional distributions of mispricing and explanatory variables in the panel regression, the impact on the distribution of mispricing is conditionally independent of the impact on the distribution of the explanatory variables. We believe, however, that this assumption is unlikely to be violated in practice given the bond-specific nature of mispricing and the dealer-specific nature of most of the explanatory variables in the panel regression. We are grateful to the referee for raising this issue.

include the ratio of interdealer trading volume to all trading volume as a measure of the relative size of customer vs. dealer trading activity in the network.

Finally, as measures of the trading costs and liquidity of the individual bonds, we include the age of the bond, the logarithm of the size of the bond issue, the effective bid-ask spread of the bonds, and the Amihud measure of the bonds in the regression.

The panel regression specification is given by

$$\begin{aligned}
Y_{it} = & \sum_{j=1}^T \alpha_j D_{jt} \\
& + \beta_1 \text{Coupon}_i + \beta_2 \text{Issuer CDS}_{it} + \beta_3 \text{Duration}_{it} \\
& + \beta_4 \text{Dealer CDS}_{it} + \beta_5 \text{Dealer Haircut}_{it} \\
& + \beta_6 \text{Number of Dealers}_{it} + \beta_7 \text{Number of Institutions}_{it} \\
& + \beta_8 \text{Dealer Centrality}_{it} + \beta_9 \text{Dealer Share of Volume}_{it} \\
& + \beta_{10} \text{Age}_{it} + \beta_{11} \text{Issue Size}_i + \beta_{12} \text{Bid Ask Spread}_{it} \\
& + \beta_{13} \text{Amihud Measure}_{it} + \epsilon_{it},
\end{aligned} \tag{1}$$

where  $Y_{it}$  denotes the mispricing for bond  $i$  at the end of month  $t$ ,  $D_{jt}$  is a monthly fixed effects dummy variable that takes value one for month  $t$  and zero otherwise, and  $\epsilon_{it}$  denotes the regression residual. Table 3 reports the results from the panel regression. Standard errors are clustered by bond.

The results in Table 3 provide strong support for the cross-sectional implications of the Treasuries-as-money literature. As shown, mispricing is directly related to the duration of the matching Treasury bond used in the estimation. The positive relation is not only highly statistically significant, but is also large in economic terms. In particular, an increase in the duration of a bond by one year maps into an increase in mispricing of 9.13 basis points. These results suggest the presence of a term structure to the near-money convenience yield of Treasury and are consistent with term structure implications of models such



as Krishnamurthy and Vissing-Jorgensen (2012). Furthermore, these results are also consistent with the classic limits-to-arbitrage literature in which deviations from fair value may be more severe for riskier securities (for which these limits are more likely to be binding).

Table 3 also provides support for the key implications of the intermediary-constraints literature. As shown, the coefficient for the dealer CDS spread is positive and highly significant. The positive sign of the coefficient implies that mispricing is directly related to dealer capital costs as implied by the equity constraint hypothesis of He and Krishnamurthy (2012, 2013), He, Kelly, and Manela (2017), and others. The effect is also economically significant. An increase of 100 basis points in the dealer CDS spread is associated with an increase in mispricing of 3.96 basis points. Similarly, the coefficient for the dealer haircut is also positive and highly significant. The positive sign for the dealer haircut implies that mispricing is larger for bonds which are primarily intermediated by dealers who face leverage constraints, consistent with Brunnermeier and Pedersen (2009), Gârleanu and Pedersen (2011), Adrien, Etula, and Muir (2014), and others. A one-percentage-point increase in the haircut maps into an increase in mispricing of 1.50 basis points. In summary, these cross-sectional results all appear broadly consistent with the implications of a number of current theoretical models in the intermediary-constraints literature (assuming, of course, that these models could be embedded into frameworks allowing for heterogeneity in intermediaries across assets).

The results in Table 3 also provide evidence that mispricing is related to differences in the network structure across bonds. First, the number of dealers holding positions in a bond is significantly negatively related to mispricing. This intuitive result suggests that intermediation has a beneficial effect on the quality of financial market prices. In particular, deviations from fair value are lower in markets with greater intermediary participation. The effect is also significant in economic terms—doubling the number of dealers reduces mispricing by an average of 2.12 basis points (see Table 1 for the average values of network variables). This result harmonizes well with the general implications of

the search literature in that we would anticipate expected search times to be lower in markets in which more intermediaries are active. Second, the number of institutional investors holding positions in a bond is positively related to mispricing, although the coefficient is marginally insignificant at the ten-percent level. Still, the positive sign is intriguing since it implies that broader institutional interest in a security might adversely impact its pricing. In terms of economic magnitudes, doubling the number of institutional investors increases mispricing by an average of 1.76 basis points. Third, dealer centrality is negatively related to mispricing and is significant (at the ten-percent level). The economic magnitude of the effect is also important—doubling the percentage of inventory held by the primary dealer reduces mispricing by an average of 1.42 basis points. This result is consistent with some network models of endogenous intermediation such as Üslü (2019) that suggest that intermediaries specialize in assets based on their risk-bearing capabilities. Thus, if the most-central intermediaries take larger positions because of their comparative risk-bearing advantage, this may be reflected in pricing of the bonds they intermediate. Finally, the results show that the dealer share of volume is negatively and significantly related to mispricing. Doubling the share of total trading volume by dealers reduces mispricing by an average of 0.79 basis points. This implies that bonds that trade in networks with more interdealer trading relative to customer trading tend to have less mispricing. This result again appears consistent with an interpretation that higher interdealer trading results in shorter expected search times. In contrast, this result seems inconsistent with the inattentive-investor hypothesis in the slow-moving-capital literature which implies that mispricing should decrease as customers become more engaged in trading.

Table 3 shows that the liquidity and transaction cost measures are not related to the cross-sectional structure of mispricing. In particular, age, issue size, bid-ask spreads, and the Amihud measure are all insignificant in the panel regression. Furthermore, none of these variables are significant in economic terms—the coefficient estimates imply that doubling the magnitude of the liquidity variables impacts mispricing by less than a basis point. Finally, Table 3 shows that neither

the bond coupon nor the issuer CDS spread variables are significant in the panel regression.

We conduct a number of robustness checks on these results by estimating alternative specifications. For example, in order to verify that our mispricing measure is robust to potential minor timing mismatches between the observed final trades of the TLGP bonds and the Treasury securities which are priced as of 3:30 PM ET, we estimate the panel regression using only observations for which the final transaction price for the TLGP bonds is observed after 2:30 PM ET and 3:30 PM ET, respectively. The results are very similar to those reported in Table 3. We also examine the robustness of the results in Table 3 to alternative ways of clustering standard errors. In particular, we also compute  $t$ -statistics using standard errors obtained by clustering by the primary dealer (as identified at the end of the previous month), and by double clustering by bond and the primary dealer. The results given by these alternative clustering approaches are very similar to those reported in Table 3. As a robustness check for the issuer CDS spread, we reestimate the panel regression over only the earlier part of the sample period through April 2009 when mispricing was the highest. The results are similar to those reported in Table 3. In particular, the coefficient for the issuer CDS spread is insignificant ( $t$ -statistic 0.70).

Finally, to explore the source of the identification of the variables included in the panel regression, we estimated both purely time series and cross-sectional versions of the panel regression. In particular, we estimate a time series version in which we include both bond and monthly fixed effects (to avoid collinearity with the bond fixed effects, this specification omits bond-specific variables such as the coupon rate, issue size, etc.) We also estimate a cross-sectional version by using a standard Fama and MacBeth (1973) specification. The Internet Appendix discusses the estimation of these alternative specification and presents the results. As shown in the Internet Appendix, the effects of dealer CDS, dealer haircuts, dealer centrality, and dealer share of volume are identified via time series variation, the effects of duration, dealer haircuts, and dealer centrality are identified via the cross-section, and the effects of the number of dealers are

identified jointly via time series variation and the cross-section.<sup>18</sup>

## 7. MISPRICING AND NEAR-MONEY PREMIA

The panel regression in the previous section provides support for the presence of a term structure in mispricing, consistent with the implications of models that focus on the moneylike nature of Treasury securities or the classic limits-to-arbitrage literature. In this section, we explore the relation between mispricing and the near-money premium or convenience yield associated with Treasury securities in greater depth.

Several recent papers provide empirical measures of the near-money premia in Treasury security prices. For example, Nagel (2016) uses the yield spread between three-month general collateral Treasury repo rates and three-month Treasury bills as a measure of the near-money premium in short-term Treasury bills. Krishnamurthy and Vissing-Jorgensen (2012) use the spread between ten-year AAA-rated corporate bonds and ten-year Treasury bonds to identify variation in the near-money premium for longer-term Treasury securities. Motivated by this literature, we begin by examining whether mispricing is related to these empirical measures of near-money premia in the way suggested by theory.

In particular, we test whether the strong relation between mispricing and duration is related to cross-sectional differences in the near-money premia incorporated into bonds. To do this, we regress mispricing on the interactions between duration and the three-month repo and AAA-rated corporate bond spreads. If the relation between mispricing and duration arises from differences in near-money premia across bonds rather than some other type of duration-related effect, then these interaction variables should subsume the explanatory power of duration by itself in this regression.

Table 4 reports the results from the panel regression of mispricing on du-

---

<sup>18</sup>We are grateful to the referee for suggesting this identification analysis.

ration, duration times the repo spread, and duration times the AAA-rated corporate bond spread. As shown, the coefficients for both of the interaction variables are positive and significant. In contrast, the coefficient for duration by itself is not significant. These results provide strong evidence that the relation between mispricing and duration is driven by cross-sectional differences in the near-money premia embedded into the prices of the matching Treasury bonds used to estimate mispricing. These results also make a compelling case that the Treasuries-as-money convenience yield may represent a major source of the mispricing observed in riskless securities when measured relative to Treasury securities. Finally, these results argue that there may be a significant term structure to the near-money premia embedded in Treasury securities, consistent with Krishnamurthy and Vissing-Jorgensen (2012).<sup>19</sup>

## 8. INTERMEDIARY CONSTRAINTS

In this section, we explore the implications of this literature in greater depth by testing whether the relation between mispricing and dealer CDS spreads and haircuts arises through the economic mechanisms common to many current intermediary-based models.

### 8.1 The Economic Mechanism

The panel regression in Table 3 provides evidence that mispricing is significantly related to the constraints faced by financial intermediaries as measured by dealer CDS spreads and margins. Recall from earlier discussion, however, that intermediary-based theories imply that dealer capital and haircuts should affect mispricing primarily through the dealer inventory channel. As discussed

---

<sup>19</sup>As a robustness check, we also estimate the regression in Table 4 in changes rather than levels. The results are similar in that duration is again not significant, while both the interaction of duration and changes in the repo spread and the interaction of duration and changes in the AAA-spread are positive and significant.

in Section 2, the intermediary literature generally implies that asset mispricing arises through a two-stage economic mechanism. In the first stage, an exogenous shock to intermediary capital or leverage results in dealers reducing their inventory holdings of securities. In the second stage, the reduction in dealer inventory leads to market prices that may diverge from economic fundamentals. Thus, the effects of shocks to dealer capital and leverage should impact mispricing exclusively through an inventory channel. To explore the specific implications of the literature at the most fundamental level possible, our approach will be to test separately whether each stage of the economic mechanism is consistent with the empirical evidence.

To study the first stage of the economic mechanism, we test whether exogenous shocks to dealer CDS and haircuts are associated with changes in dealer inventory in the way suggested by theory. Specifically, we regress changes in dealer inventory on its lagged values and on contemporaneous and lagged changes in dealer CDS spreads and dealer haircuts. Table 5 reports the results from this panel regression.<sup>20</sup>

The results in Table 5 provide strong support for the first stage of the economic mechanism implied by the intermediary-based models. In particular, the coefficients for the contemporaneous and first lagged changes in dealer CDS spreads are negative and highly significant. The negative sign of these coefficients is consistent with a scenario in which intermediaries that face increased capital constraints and costs of holding inventories—as reflected by their CDS spreads—respond by reducing their inventories of securities. Similarly, the coefficients for the second and third lagged changes in dealer haircuts are negative and significant. The negative sign of these coefficients is likewise consistent with a scenario in which dealers reduce their inventory holdings when facing tighter

---

<sup>20</sup>Since the intermediary-constraints literature is framed primarily in terms of the impact of shocks (changes) in dealer capital and/or leverage on inventory and mispricing, we believe that it is much more interpretable to examine the economic mechanism in terms of changes rather than levels.

leverage constraints.

Turning now to the second stage of the economic mechanism, our objective is to examine whether a decline in dealer inventory for a specific guaranteed bond results in an increase in mispricing for that bond. Furthermore, we also want to examine the implication that intermediary capital and leverage constraints affect mispricing *exclusively* through the inventory channel. It is important, however, to consider the potentially endogenous nature of dealer inventory choices in the analysis. In particular, while the intermediary-based literature implies that changes in inventory affect mispricing, it is also possible that mispricing affects inventory choices since prices and quantities are jointly determined in equilibrium.

To address these potential endogeneity issues, we use an instrumental variables (IV) approach in examining the relation between mispricing and dealer inventory. To begin, we instrument changes in dealers' inventory holdings of a guaranteed TLGP bond using changes in the same dealers' inventory holdings of non-TLGP corporate bonds, and following the analysis in Table 5, we also include three lags of the change in TLGP inventory itself.<sup>21</sup> Intuitively, changes in non-TLGP inventory holdings should be a good instrument for their TLGP counterparts because they are driven by the same shocks to the capital and funding costs of a dealer. At the same time, non-TLGP inventories are unrelated to the characteristics of any specific TLGP bond other than through sharing the same dealer. Based on this intuition, we assume first that non-TLGP inventory is a valid instrument and cannot reject at the five-percent level that the inventory lags are also valid.<sup>22</sup> Table 6 shows the results from the second stage of the IV regressions of changes in mispricing on the instrumented change in inventory

---

<sup>21</sup>We believe that controlling for the time series properties is particularly important in this context since the intermediary constraints literature is largely silent on the issue of how long it takes for shocks to dealer CDS and haircuts to result in changes in dealer inventory. The results are robust to whether the lagged changes are included or not.

<sup>22</sup>Tests of specifications in which only non-TLGP inventory is used to instrument for TLGP inventory provide evidence that it is a valid instrument. The

as well as changes in dealer CDS spreads and haircuts. The results show that changes in mispricing are significantly related to changes in dealer inventory as suggested by the theory (at the ten-percent level). In particular, the negative sign on the coefficient for changes in dealer inventory implies that mispricing increases when dealer inventory declines. The effect provides support for the second stage of the mechanism driving mispricing in the intermediary-based literature.

In addition to the instrumented change in inventory, the second-stage regression in Table 6 also includes changes in dealer CDS spreads and haircuts. The evidence from Table 5 suggests that since dealer CDS and haircuts drive dealer inventory, their effect on mispricing might be subsumed by inclusion of the instrumented dealer inventory into the second-stage regression. In fact, the intermediary-based theory suggests that dealer inventory should be the only channel through which dealer capital and funding costs affect mispricing. In the environment we have in our IV regression in Table 6, the question of whether an independent variable affects the dependent variable through the instrument only is a test of the exclusion restriction itself. In addition, where multiple instruments are being used for a single endogenous variable as they are here, tests for overidentifying restrictions in the IV regression can be used to test the validity of the exclusion restriction for the instruments.<sup>23</sup> We already have four excluded instruments in our specification, and so a test of whether or not constraints to dealer capital (proxied by CDS) or leverage (proxied by haircuts) affect mispricing solely through the inventory channel is possible by examining a sequence of specifications of the IV inventory-mispricing regression where we include these

---

first-stage  $F$ -statistic in a specification with only non-TLGP inventory is large, and the second stage regression results are very similar to those provided in Table 6. Additional discussion of this specification, as well as the overidentifying restrictions, is provided in the Internet Appendix.

<sup>23</sup>More formally, under the null hypothesis that all the instruments are properly excluded, the Hansen  $J$  statistic will be distributed chi-squared with  $K - L$  degrees of freedom, where  $K$  is the number of instruments and  $L$  is the number of endogenous variables (in our case  $L = 1$ , inventory).



variables or their lags one at a time in the instrument list and check the resulting Hansen  $J$  statistic. Each specification with one of the additional CDS or haircut variables generates a large  $J$  statistic and a strong rejection of the hypothesis that these proxies for capital or leverage affect mispricing solely through the inventory channel.<sup>24</sup> Since dealer CDS and haircuts do not appear to satisfy the exclusion restriction, we include them as additional regressors in the second-stage regression in Table 6.

Overall, the results reported in Table 6 have several important implications for the economic mechanism at the center of the intermediary-based theories. On one hand, the results show that increases in dealer inventory are associated with reductions in mispricing as suggested by the intermediary-based theory. On the other hand, the results indicate that the effects of intermediary capital and leverage constraints on mispricing do not happen exclusively through the inventory channel. Table 6 shows that even after controlling for changes in dealer inventory, changes in dealer CDS spreads and haircuts remain significantly related to mispricing. In particular, the coefficients for changes in dealer CDS spreads and dealer haircuts are both positive in sign and highly significant.

In summary, the empirical results provide support for both components of the economic mechanism underlying intermediary-based models of mispricing. In particular, increases in dealer CDS spreads and haircuts both lead to reductions in dealer inventories of the guaranteed TLGP bonds. In turn, a decline in dealer inventory is directly associated with an increase in mispricing for these bonds. The empirical results, however, also leave us with a puzzle. Specifically, these

---

<sup>24</sup>Additional discussion and a table of these regression results are given in the Internet Appendix. To summarize the numerical results, the  $J$  statistics we find when contemporaneous CDS or haircuts are added (individually) to the baseline specification are both above 20. When we instead add lagged values of CDS or haircuts, the  $J$  statistics are 20 and 12, respectively. These values allow us to reject the hypothesis that the effects of capital or leverage constraints operate exclusively through the inventory channel.

results suggest that dealer capital and leverage constraints impact mispricing not only through the inventory channel, but potentially through other types of mechanisms as well. One possibility is suggested by the model presented in Üslü (2019) in which investor trading decisions depend both on inventory and network meeting rates. If shocks to dealer capital or leverage impact not only their inventory decisions but also their meeting rates, then network frameworks such as Üslü (2019) may provide an additional theoretical channel for explaining how intermediary constraints may impact mispricing.

## 8.2 The GCF Repo Eligibility Event

In the previous subsection, we explored the relation between mispricing and the economic mechanisms implied by current intermediary-based theories. In this subsection, we expand on previous results by using a major exogenous shock in the availability of repo financing to help identify the causal relation between changes in dealer constraints and the mispricing of the guaranteed bonds.

Prior to April 2009, the guaranteed bonds were not eligible for financing through the General Collateral Finance (GCF) Repo service of the FICC, making these bonds much more difficult to finance than U.S. Treasury or agency bonds. On March 27, 2009, the FICC issued a notice announcing that effective April 1, 2009, it would begin accepting FDIC guaranteed corporate bonds for GCF Repo processing. After that point, participating dealers were able to trade and clear repo against guaranteed bond collateral on the same platform as repo backed by U.S. Treasury and agency collateral.

The GCF Repo service was designed by the FICC to provide an efficient way for securities dealers to finance their inventories of U.S. Treasury and agency bonds. The GCF Repo service exists alongside the tri-party repo platform but differs from it in a number of ways. One important difference is that GCF Repo trades do not involve the posting of margins or haircuts at the individual bond level. Thus, GCF Repo has the potential to significantly reduce the margins faced by some dealers.<sup>25</sup> Because the FICC acts as the central counterparty for

---

<sup>25</sup>In practice, however, some margin may still be required at the netted portfo-

all GCF Repo transactions, dealers do not face counterparty credit risk from each other. The amount credited to a cash lender’s account equals the market value of the securities financed. The FICC relies on its clearing fund as a protection against default of a given counterparty. In contrast, tri-party repo transactions typically rely on haircuts to protect the cash lender in the event of a counterparty default. GCF Repo also differs from other types of repo because the transactions are anonymous. GCF Repos are negotiated through interdealer brokers on a blind basis. This mechanism especially favors dealers who have high perceived counterparty risk, whose tri-party cash lenders may demand large haircuts. Furthermore, the efficient design of clearing and settlement for GCF Repos reduces transaction costs and enhances liquidity in the interdealer market (Aguerci et al, (2014)). An additional difference is that GCF Repo is an interdealer market, while the tri-party market includes participation from other financial institutions such as money market funds. Finally, it is important to emphasize that the tri-party repo market and the GCF Repo markets exist side by side and neither dominates the other. Dealers are often active in both markets, and decisions about which repo market to use in financing a specific position may depend on the specifics of their portfolio as well as the net margins and financing costs they face.<sup>26</sup>

What is clear, however, is that the inclusion of the guaranteed bonds among the collateral classes eligible for GCF Repo represents a positive exogenous funding shock for these bonds. The eligibility event immediately resulted in an expanded set of financing options that could significantly reduce the haircuts faced

---

lio level. In particular, GCF netting members must maintain a deposit to the Clearing Fund with the FICC on an ongoing basis. Each business day, the FICC determines the margin requirement based on the VaR of the member’s portfolio. Since 2007, the FICC has also imposed an additional “GCF Premium Charge” on the GCF Repo portion of the Clearing Fund deposit which depends on the size and composition of the GCF portfolio.

<sup>26</sup>For discussions of repo markets, see Copeland, Duffie, Martin, and McLaughlin (2012), Krishnamurthy, Nagel, and Orlov (2014), and Infante (2019).

by dealers who wanted to hold positions in the guaranteed bonds.<sup>27</sup> As discussed, the additional option of having access to the GCF Repo market was particularly valuable to dealers facing larger tri-party repo haircuts. The resulting positive shock to the ability of dealers to finance inventory positions in guaranteed bonds allows us to test directly the implications of the leverage constraint hypothesis.<sup>28</sup> In particular, the hypothesis implies that mispricing should decline the most for the bonds whose dealers face the most-severe leverage constraints in the form of the highest tri-party haircuts prior to the event.

To illustrate that dealers did, in fact, respond to the positive funding shock, the upper panel of Figure 5 plots the change in dealer inventory holdings over the month surrounding the inclusion of the guaranteed bonds in the GCF Repo market. Specifically, Figure 5 shows the change in the percentage of the individual bond issues held by primary dealers in inventory for the 44 bonds in the sample as of the end of March 2009. The changes in inventory holdings are measured from the end of March 2009 to the end of April 2009. As shown, dealer inventory holdings increase for 36 of the 44 bonds in the sample (81.82 percent of the bonds). At the end of March 2009, dealers held an average of 7.96 percent of the guaranteed bonds in their inventory. By the end of April 2009, dealers now held an average of 10.37 percent of the bonds in their inventory. This change represents more than a 30-percent increase in the amount of inventory

---

<sup>27</sup>One possible implication of this is that tri-party haircuts might matter less for the pricing of TLGP bonds after April 2009. To examine this, we reestimate Table 3 for the period before the GCF event and the period after the GCF event. The effect of tri-party haircuts on mispricing decreased following April 2009 after the bonds became eligible for GCF repo. The estimated effect of dealer haircuts on mispricing from Table 3 declines from 3.87 ( $t$ -statistic 2.13) before April 2009 to 1.11 ( $t$ -statistic 1.88) after April 2009 but remains significant (at the ten-percent level).

<sup>28</sup>A recent paper by Chen, Chen, He, Liu, and Xie (2018) also uses an exogenous shock to the haircuts faced by participants in the Chinese corporate bond markets to identify the effects of asset pledgeability on security prices.

held by dealers. This increase is highly significant from both an economic and a statistical perspective ( $t$ -statistic 2.67).

The inclusion of the guaranteed bonds in the GCF Repo market also represents a positive exogenous shock to the liquidity of these bonds. One reason is that the bonds became more widely held among dealers. Prior to April 1, 2009, the 12 primary dealers accounted for 86 percent of the total inventory holdings for the guaranteed bonds while other dealers accounted for 14 percent. The inventory share of the non-primary dealers increased to 21 percent of the total by April 30, 2009, as repo financing for these bonds became more widely available through GCF Repo. The greater dispersion of inventory holdings among dealers likely lowered the search costs of finding dealer intermediation. The increased competition among dealers and the reduction of transaction costs in interdealer markets had the effect of reducing bid-ask spreads and increasing market depth. The resulting positive shock to the liquidity of the guaranteed bonds also allows us to test directly the impact of liquidity on mispricing. In particular, the literature on liquidity suggests that mispricing should decline more for the bonds that were less liquid prior to the inclusion.

To illustrate that there was in fact a positive liquidity shock associated with the GCF Repo eligibility event, the lower panel of Figure 5 plots the change in the effective bid-ask spread for the individual bonds over the following month. As shown, the effective bid-ask spread declines for 37 of the 44 bonds in the sample (84.09 percent of the bonds). At the end of March 2009, the average effective spread is 17.98 cents per \$100 par amount. At the end of April 2009, the average effective spread is 13.20 cents per \$100 par amount. Thus, the average effective bid-ask spread declines by more than 26 percent in the month following the GCF inclusion event. Again, this decline is both economically and statistically significant ( $t$ -statistic  $-4.16$ ).

To test the implications of the intermediary-constraints literature, we regress the change in mispricing over the month following the GCF Repo eligibility event on ex ante measures of the dealer CDS spread and haircut. Since the effect of

the eligibility event may be to reduce the dealer haircut to near zero in some situations, the ex ante value of the haircut is then essentially also the change in the haircut associated with the event. Thus, this regression specification can be viewed as a standard difference-in-differences analysis of the effect of an exogenous change in dealer haircuts on the change in mispricing. Note that in this analysis, we are implicitly making the exclusion restriction assumption that the inclusion of the sample bonds among the collateral classes eligible for GCF repo only impacted their mispricing through the dealer funding costs and liquidity channels. To test whether changes in liquidity and network structure impact mispricing in the manner suggested by the microstructure literature, we also include the ex ante bid-ask spread, issue size, and number of dealers as additional explanatory variables in the regression. To provide additional perspective for the results, we also note that the average level of mispricing for the bonds in the sample declines by about 28 basis points over the month following the inclusion event. Table 7 presents the results from the cross-sectional regression.

The regression results provide strong support for the empirical implications of the intermediary-constraints literature. The coefficient for the ex ante dealer CDS spread is significantly negative with a  $t$ -statistic of  $-2.09$ . The negative sign of the coefficient implies that mispricing declined the most following the GCF eligibility event for the bonds whose dealers faced the highest ex ante capital costs. This result is both intuitive and consistent with intermediary-based theories. Similarly, the coefficient for the dealer haircut measure is highly significant with a  $t$ -statistic of  $-3.95$ . The negative sign of the coefficient implies that mispricing decreases the most for the bonds whose dealers face the highest ex ante leverage or haircut constraints. This cross-sectional pattern following the exogenous funding shock represented by the GCF Repo inclusion event is again intuitive and fully consistent with the implications of the intermediary-constraints literature.

In contrast, the regression results provide little support for the implications of the microstructure literature. In particular, neither the ex ante bid-ask spread nor the number of dealers in the network is significant. Similarly with the size of the bond issue.

### 8.3 The Stress Test Announcement Event

As a second way of identifying the causal relation between mispricing and intermediary constraints, we use the exogenous shock to dealer balance sheets that occurred with the announcement of bank stress tests. On February 10, 2009 Treasury Secretary Geithner announced the interagency Financial Stability Plan, a major component of which was the Supervisory Capital Assessment Program (SCAP), “a forward-looking assessment of the risks on bank balance sheets and their capital needs” which came to be known as the “bank stress tests.”<sup>29</sup> These tests aimed to assess whether or not the largest financial institutions (those with more than \$100 billion in total assets) had the capital necessary to continue lending and to absorb the potential losses that could result from a severe decline in the economy. The announcement stated that banks subject to these “stress tests” would need to demonstrate that they had a sufficient capital buffer to survive hypothetical shocks to be stipulated within the soon-to-commence tests. If the tests showed that a bank failed to have sufficient capital, it would be expected to attempt to tap capital markets to increase its buffer, or receive an “investment from Treasury in convertible securities.”<sup>30</sup>

This announcement represented a major exogenous capital shock to the dealers in our study as it resulted in a sudden shift in the capital standards for the largest intermediaries. The amount of capital required to support their current balance sheet was to be reassessed under hypothetical macroeconomic and finan-

---

<sup>29</sup>See <https://www.treasury.gov/press-center/press-releases/Pages/tg21.aspx>.

<sup>30</sup>If private capital markets were inaccessible, the plan stated that these banks would “receive a preferred security investment from Treasury in convertible securities that they can convert into common equity if needed to preserve lending in a worse-than-expected economic environment.” The announcement indicated that this convertible preferred security would carry a to-be-determined dividend and a conversion price set at “a modest discount” from the prevailing level of the institution’s stock price as of the close of the day before the announcement (February 9, 2009).

cial scenarios which were much more severe than the firms had already encountered. The market reaction to the announcement also resulted in an immediate capital loss for most U.S. banks, with the severity of the reaction reflecting investor expectations of the capital shortfall of each firm. At the upper end of the spectrum were several U.S. bank holding companies. Their equity valuations declined between 15 to 20 percentage points on the day. The stock prices of U.S. banks that were considered to be less impacted by the new capital requirements decreased between 8 to 10 percentage points. At the other end of the spectrum were foreign banking organizations that were not initially subject to the new capital requirements. Their stock prices declined only modestly on the day.

We use the stock price reaction on the announcement date to measure the magnitude of the capital shock to dealers that followed the announcement of the stress tests. This approach resembles Hanson and Stein (2015) and Gertler and Karadi (2015) who use monetary policy announcements to identify the exogenous effect of monetary policy shocks. For each bond, we compute the inventory-weighted announcement day stock return of the primary dealers who held the bond as of January 31, 2009. We then examine the relation between the dealers' stock price reaction to the announcement and the change in mispricing of individual bonds between January 31, 2009 and February 28, 2009. Figure 6 plots the inventory-weighted dealer stock returns for the announcement date of the stress tests for each of the bonds in the sample as of the end of January 2009. As shown, there is considerable cross-sectional variation in the shocks to dealer capital for the guaranteed bonds.

To test the implications of the intermediary-constraints literature, we follow an approach similar to that in the previous section. In particular, we regress the changes in mispricing during the announcement month for the individual bonds on the corresponding ex ante values of the dealer CDS spread, dealer haircut, and liquidity measures. To capture the cross-sectional impact of the announcement on dealer capital, we include the inventory-weighted average stock return for the primary dealers on February 10, 2009 for each of the bonds in the regression. We again note that we are implicitly making the exclusion restriction



assumption that the SCAP announcement only affected TLGP bond mispricing through its effect on dealer capital costs. We are not aware of any other channel through which the announcement could have had a differential impact on the bonds intermediated by the respective primary dealers, other than perhaps through preexisting differences in bond characteristics such as liquidity between the bonds. Therefore, we control for pre-existing bond characteristics such as bid-ask spreads and issue size in the regression. Table 8 reports the regression results.

As shown, the cross-sectional regression provides strong support for the empirical implications of the intermediary-constraints literature. In particular, the dealer capital shock on the announcement date is significantly negatively related to the change in mispricing of the sample bonds during the month of February. These results show that bonds held by dealers with larger expected capital shortfalls as a result of the stress tests become significantly more mispriced during this period. Once we account for the equity effect using the single-day price change, other explanatory variables are not significantly related to the change in mispricing. Our results are also consistent with those in a recent paper by Morelli, Ottonello, and Perez (2019) who find that the decline in the prices of emerging market debt around the Lehman default was larger for bonds held by the financial institutions that suffered the largest capital shocks.

## 9. MISPRICING AND SEARCH TIMES

We turn our attention next to testing the implications of the literature on search frictions for asset mispricing in more depth. Recall from the previous discussion that models such as Duffie, Gârleanu, and Pedersen (2005, 2007), Vayanos and Wang (2007), Weill (2007), Vayanos and Weill (2008), Duffie (2010), Duffie and Strulovici (2012), Duffie, Malamud, and Manso (2015), and others suggest that deviations of market prices from economic fundamentals are more likely to occur in thinner markets in which it may take longer to search for trading counterparties. In particular, this literature implies that mispricing should be directly

related to the average meeting rate of participants in a search network.

To test these empirical implications of the search literature, our approach will be to examine the cross-sectional relation between the mispricing of the guaranteed bonds and the frequency at which these bonds trade. The intuition for this approach is simply that we would expect networks with higher average meeting rates to result in a higher trading frequency. Thus, trading frequency should serve as a direct proxy for average meeting rates.

In adopting this approach, however, it is important to recognize that there is a potential endogeneity issue. In particular, while search theory implies that search times/trading frequency may be related to mispricing, it is also possible that mispricing itself generates additional trading activity as market participants attempt to exploit potentially profitable trading opportunities. As before, we need to take into account the fact that pricing and trading activity are jointly determined in equilibrium. To address this endogeneity issue, we again use an IV framework in studying the cross-sectional relation between mispricing and trading frequency.

Specifically, we begin with the number of trades during the month for each of the guaranteed bonds and instrument this measure using trading volumes for non-guaranteed corporate bonds of the same dealers. Intuitively, this approach makes sense because the instrument for trading activity of the guaranteed bonds is a measure of trading activity of the dealers who are holding the guaranteed bonds, but it is trading activity in securities not directly linked to the guaranteed bonds in our sample. For example, the approach is able to capture the fact that while one TLGP bond is intermediated by dealers who are large corporate bond intermediaries with very active trading books, another TLGP bond may be intermediated primarily by less active or smaller dealers. Non-TLGP volumes appear to be a relevant instrument for TLGP trading activity—the first-stage F statistic is 33.56—so if a dealer is an important counterparty in the corporate bond network, it is also likely to be an important counterparty in the network for guaranteed corporate bonds. Because TLGP bond mispricing is unlikely to

be affected by non-TLGP bond trading volumes except through channels related to the dealers' overall trading behavior, instrumenting TLGP bond trade counts with non-TLGP bond volumes appears to also satisfy the exclusion restriction.

Table 9 reports the results from the IV regression of changes in mispricing on instrumented trading frequency. As shown, there is a strong and significant negative relation between changes in mispricing and trading frequency. In particular, the coefficient for trading frequency is highly significant with a  $t$ -statistic of  $-4.39$ . These results provide strong support for the empirical implications of the search literature.<sup>31</sup>

## 10. A COMBINED ANALYSIS

The panel regression reported in Section 6 tests the cross-sectional implications of the various theoretical literatures. In Sections 7 through 9, we examine the cross-sectional implications of the individual literatures in more depth, typically using either an exogenous shock as an identification vehicle or an IV approach for endogenous variables such as inventory or trading activity. In this section, we conduct a joint analysis in which we include the key variables used in the individual tests of the Treasuries-as-money, intermediary-constraints, and search-friction literatures (reported in Tables 4, 6, and 9) in a single all-inclusive specification. In doing this, one of our objectives is to explore whether any of the various theoretical frameworks in the literature appears to be subsumed by the others.

Table 10 reports the results from the IV regression of changes in mispricing on the following variables: duration times the change in the repo spread, duration times the change in the AAA spread, the instrumented change in dealer inventory, the change in the dealer CDS spread, the change in the dealer haircut, and the instrumented trading frequency.

---

<sup>31</sup>The results of the regression in Table 9 are basically the same if we use TLGP trading volumes instead of the number of trades as an alternative measure of trading activity. The instrument in this case is also non-TLGP trading volume.

Table 10 shows that all three streams of the literature included in the analysis are supported by the data—none of the individual theoretical frameworks appears to be subsumed by the others. In particular, the two variables for the interaction between price risk and changes in near-money premia are both positive and highly significant. Thus, the Treasuries-as-money hypothesis continues to receive strong support even when the other variables are included.

Similarly, the results provide support for the cross-sectional implications of the intermediary-constraints literature. In particular, the coefficient for the instrumented change in dealer inventory is negative and significant, which is again consistent with the role of the inventory channel in this literature. Interestingly, the change in the dealer CDS spread is no longer significant in the combined specification. On the other hand, the change in dealer haircut is positive and significant, which again poses a challenge for the hypothesis that intermediary constraints impact asset pricing only through the inventory channel.

Finally, the results in Table 10 show that the cross-sectional implications of the search-friction literature are also supported by the data. The coefficient for the instrumented trading frequency is negative and significant. Again, this result is consistent with the earlier results.

## 11. CONCLUSION

Recent research documents a number of cases in which securities with essentially identical cash flows trade at different prices. A growing number of theories have been proposed to explain these apparent violations of the law of one price.

This paper studies the determinants of mispricing using an extensive cross-sectional data set of the spreads of guaranteed corporate bonds relative to Treasury bonds as well as proprietary data on the CDS spreads, haircuts, inventory positions, and trading activity of the primary dealers providing intermediation for the individual bonds.

The results provide strong support for the key implications of models that focus on the near-money role of Treasury securities. The results also provide support for the intermediary-constraints literature in that we find strong evidence that shocks to dealer CDS spreads and haircuts impact the cross-section of mispricing. However, while the results indicate that these shocks operate through an inventory channel as hypothesized in this literature, they also indicate that they may impact mispricing through other channels as well. Finally, the results provide support for the implications of the search-frictions/network-structure literatures in that we find that the cross-section of mispricing is related to average search times or trading frequencies as well as to various network structure measures.

It is important to provide the caveat, however, that our results are based only on the TLGP bond market. Thus, the external validity of our results can probably only be ultimately established through additional empirical work in other markets with different characteristics. Our results, however, provide at least some support for the possibility that they may apply more broadly. For example, finding that changes in non-TLGP inventory provide a strong instrumental variable for changes in dealer TLGP inventory suggests that the intermediary constraints/mispricing mechanisms at play in the TLGP market may also apply in the broader corporate bond markets in which these intermediaries participate. These considerations indicate the need for additional research on the sources of cross-sectional dispersion in mispricing across assets in other markets.

## REFERENCES

- Acharya, V. V., Pedersen, L., 2005. Asset pricing with liquidity risk. *Journal of Financial Economics* 77, 375-410.
- Adrien, T., Etula, E., Muir, T., 2014. Financial intermediaries and the cross-section of asset returns. *Journal of Finance* 69, 2557-2596.
- Afonso, G., Lagos, R., 2019. Trade dynamics in the market for federal funds. *Econometrica* 83, 263-313.
- Agueci, P., Alkan, L., Copeland, A., Davis, I., Martin, A., Pingitore, K., Prugar, C., Rivas, T., 2014. A primer on the GCF repo service. Federal Reserve Bank of New York Staff Reports, no. 671.
- Amihud, Y., 2002. Illiquidity and stock returns: Cross-section and time-series effects. *Journal of Financial Markets* 5, 31-56.
- Amihud, Y., Mendelson, H., 1986. Asset pricing and the bid-ask spread. *Journal of Financial Economics* 17, 223-249.
- Amihud, Y., Mendelson, H., 1991. Liquidity, maturity, and the yields on U.S. treasury securities. *Journal of Finance* 46, 1411-1425.
- Amihud, Y., Mendelson, H., Pedersen, L. H., 2005. Liquidity and asset prices. *Foundations and Trends in Finance* 1, 269-364.
- Anderson, A., Du, W., Schlusche, B., 2019. Money market fund reform and arbitrage capital. Working paper, University of Chicago.
- Atkinson, A., Eisfeldt, A., Weill, P.-O., 2015. Entry and exit in OTC derivatives markets. *Econometrica* 83, 2231-2292.
- Babus, A., 2016. The formation of financial networks. *RAND Journal of Economics* 47, 239-272.
- Babus, A., Hu, T. W., 2017. Endogenous intermediation in over-the-counter

- markets. *Journal of Financial Economics* 125, 200-215.
- Babus, A., Kondor, P., 2018. Trading and information diffusion in over-the-counter markets. *Econometrica* 86, 1727-1769.
- Boudoukh, J., Whitelaw, R., 1993. Liquidity as a choice variable: A lesson from the Japanese government bond market. *Review of Financial Studies* 6, 265-292.
- Brunnermeier, M., Pedersen, L. H., 2009. Market liquidity and funding liquidity. *Review of Financial Studies* 22, 2201-2238.
- Brunnermeier, M., Sannikov, Y., 2014. A macroeconomic model with a financial sector. *American Economic Review* 104, 379-421.
- Caballero, R., 1995. Near-rationality, heterogeneity, and aggregate consumption. *Journal of Money Credit and Banking* 27, 29-48.
- Chen, H., Cui, R., He, Z., Milbradt, K., 2018. Quantifying liquidity and default risks of corporate bonds over the business cycle. *Review of Financial Studies* 31, 852-897.
- Chen, H., Chen, Z., He, Z., Liu, J., Xie, R., 2018. Pledgeability and asset prices: Evidence from the Chinese corporate bond markets. Working paper, MIT.
- Chien, Y.-L., Cole, H., Lustig, H., 2012. Is the volatility of the market price of risk due to intermittent portfolio rebalancing? *American Economic Review* 102, 2859-2896.
- Copeland, A., Duffie, D., Martin, A., McLaughlin, S., 2012. Key mechanics of the U.S. tri-party repo market. *FRBNY Economic Policy Review* 18, 17-28.
- Copeland, A., Martin, A., Walker, M., 2014. Repo runs: Evidence from the tri-party repo market. *Journal of Finance* 69, 2343-2380.
- Demsetz, H., 1968. The cost of transacting. *Quarterly Journal of Economics* 82, 33-53.
- Di Maggio, M., Kermani, A., Song, Z., 2017. The value of trading relations in

- turbulent times. *Journal of Financial Economics* 124, 266-284.
- Du, W., Tepper, A., Verdelhan, A., 2018. Deviations from covered interest rate parity. *Journal of Finance* 73, 915-957.
- Duffee, G. R., 1996. Idiosyncratic variation of treasury bill yields. *Journal of Finance* 51, 527-551.
- Duffie, D., 2010. Asset price dynamics with slow-moving capital. *Journal of Finance* 65, 1237-1267.
- Duffie, D., Gârleanu, N., Pedersen, L. H., 2005. Over the counter markets. *Econometrica* 73, 1815-1847.
- Duffie, D., Gârleanu, N., Pedersen, L. H., 2007. Valuation in over-the-counter markets. *Review of Financial Studies* 20, 1865-1900.
- Duffie, D., Malamud, S., Manso, G., 2015. Information percolation in segmented markets. *Journal of Economic Theory* 157, 1130-1158.
- Duffie, D., Scheicher, M., Vuillemeys, G., 2015. Central clearing and collateral demand. *Journal of Financial Economics* 116, 237-256.
- Duffie, D., Strulovici, B., 2012. Capital mobility and asset pricing. *Econometrica* 80, 2469-2509.
- Eisfeldt, A. L., Herskovic, B., Rajan, S., Siritwardane, E., 2019. OTC intermediaries. Working paper, UCLA.
- Elton, E. J., Gruber, M. J., Agrawal, D., Mann, C., 2001. Explaining the rate spread on corporate bonds. *Journal of Finance* 56, 247-277.
- Fama, E. F., MacBeth, J. D., 1973. Risk, return, and equilibrium: Empirical tests. *Journal of Political Economy*, 81 607-636.
- Farboodi, M., 2017. Intermediation and voluntary exposure to counterparty risk. Working paper, MIT.



- Farboodi, M., Jarosch, G., Shimer, R., 2018. The emergence of market structure. Working paper, Princeton University.
- Fleckenstein, M., Longstaff, F. A., 2019. The U.S. treasury floating rate note puzzle: Is there a premium for mark-to-market stability? *Journal of Financial Economics*, forthcoming.
- Fleckenstein, M., Longstaff, F. A., Lustig, H., 2014. The TIPS-treasury bond puzzle. *Journal of Finance* 69, 2151-2197.
- Frame, W. S., Fuster, A., Tracy, J., Vickery, J., 2015. The rescue of Fannie Mae and Freddie Mac. Federal Reserve Bank of New York, Staff Report No. 719.
- Gabaix, X., Laibson, D., 2001. The 6D bias and the equity premium puzzle. *NBER Macroeconomics Annual* 16, 257-312.
- Gârleanu, N., Pedersen, L. H., 2011. Margin-based asset pricing and deviations from the law of one price. *Review of Financial Studies* 22, 4259-4299.
- Gertler, M., Karadi, P., 2015. Monetary policy surprises, credit costs, and economic activity. *American Economic Journal: Macroeconomics* 7, 44-76.
- Gilchrist, S., Zakrajsek, E., 2012. Credit spreads and business cycle fluctuations. *American Economic Review* 102, 1692-1720.
- Glosten, L. R., Harris, L. E., 1988. Estimating the components of the bid/ask spread. *Journal of Financial Economics* 21, 123-142.
- Gromb, D., Vayanos, D., 2002. Equilibrium and welfare in markets with financial constrained arbitrageurs. *Journal of Financial Economics* 66, 361-407.
- Gurkaynak, R. S., Sack, B., Wright, J. H., 2006. The U.S. treasury yield curve: 1961 to the present. *FEDS Working Paper* 2006-28.
- Hanson, S. G., Stein, J. C., 2015. Monetary policy and long-term real rates. *Journal of Financial Economics* 115, 429-448.
- He, Z., Krishnamurthy, A., 2012. A model of capital and crises. *Review of*

Economic Studies 79, 735-777.

He, Z., Krishnamurthy, A., 2013. Intermediary asset pricing. *American Economic Review* 103, 732-770.

He, Z., Kelly, B., Manela, A., 2017. Intermediary asset pricing: New evidence from many asset classes. *Journal of Financial Economics* 126, 1-35.

Hollifield, B., Neklyudov, A., Spatt, C., 2017. Bid-ask spreads, trading networks, and the pricing of securitizations. *Review of Financial Studies* 30, 3048-3085.

Huang, J., Wang, J., 2009. Liquidity and market crashes. *Review of Financial Studies* 22, 2607-2643.

Huang, J., Wang, J., 2010. Market liquidity, asset prices, and welfare. *Journal of Financial Economics* 95, 107-127.

Infante, S., 2019. Liquidity windfall: The consequences of repo rehypothecation. *Journal of Financial Economics* 133, 42-63.

Kamara, A., 1994. Liquidity, taxes, and short-term treasury yields. *Journal of Financial and Quantitative Analysis* 29, 403-417.

Kondor, P., Vayanos, D., 2019. Liquidity risk and the dynamics of arbitrage capital. *Journal of Finance* 74, 1139-1173.

Krishnamurthy, A., 2002. The bond/old-bond spread. *Journal of Financial Economics* 66, 463-506.

Krishnamurthy, A., Nagel, S., Orlov, D., 2014. Sizing up repo. *Journal of Finance* 69, 2381-2417.

Krishnamurthy, A., Vissing-Jorgensen, A., 2012. The aggregate demand for treasury debt. *Journal of Political Economy* 120, 233-267.

Kyle, A. S., Xiong, W., 2001. Contagion as a wealth effect. *Journal of Finance* 56, 1401-1440.

- Li, D., Schürhoff, N., 2019. Dealer networks. *Journal of Finance* 74, 91-144.
- Liu, S., Shi, J., Wang, J., Wu, C., 2007. How much of the corporate yield spread is due to personal taxes? *Journal of Financial Economics* 85, 599-636.
- Longstaff, F. A., 2004. The flight to liquidity premium in U.S. treasury bond prices. *Journal of Business* 77, 511-526.
- Lynch, A. W., 1996. Decision frequency and synchronization across agents: Implications for aggregate consumption and asset returns. *Journal of Finance* 51, 1479-1497.
- Mitchell, M., Pedersen, L. H., Pulvino, T., 2007. Slow moving capital. *American Economic Review* 97, 215-220.
- Morelli, J. M., Ottonello, P., Perez, D. J., 2019. Global banks and systemic debt crises. Working paper, New York University.
- Nagel, S., 2016. The liquidity premium of near-money assets. *Quarterly Journal of Economics* 131, 1927-1971.
- Neklyudov, A., 2019. Bid-ask spreads and the over-the-counter interdealer markets: Core and peripheral dealers. *Review of Economic Dynamics* 33, 57-84.
- Nelson, C. R., Siegel, A. F., 1987. Parsimonious modeling of yield curves. *Journal of Business* 60, 473-489.
- Pagano, M., 1989. Trading volume and asset liquidity. *Quarterly Journal of Economics* 104, 255-274.
- Sambalaibat, B., 2018. Endogenous specialization and dealer networks. Working paper, Indiana University.
- Svensson, L. E. O., 1994. Estimating and interpreting forward rates: Sweden 1992-4. National Bureau of Economic Research Working Paper #4871.
- Üslü, S., 2019. Pricing and liquidity in decentralized asset markets. *Econometrica* 87, 2079-2140.

- Vayanos, D., 1998. Transaction costs and asset prices: A dynamic equilibrium model. *Review of Financial Studies* 11, 1-58.
- Vayanos, D., Vila, J.-L., 1999. Equilibrium interest rate and liquidity premium with transaction costs. *Economic Theory* 13, 509-539.
- Vayanos, D., Wang, T., 2007. Search and endogenous concentration of liquidity in asset markets. *Journal of Economic Theory* 136, 66-104.
- Vayanos, D., Weill, P.-O., 2008. A search-based theory of the on-the-run phenomenon. *Journal of Finance* 63, 1361-1398.
- Weill, P.-O., 2007. Leaning against the wind. *Review of Economic Studies* 74, 1329-1354.
- Wolinsky, A., 1990. Information revelation in a market with pairwise meetings. *Econometrica* 58, 1-23.
- Xiong, W., 2001. Convergence trading with wealth effects: An amplification mechanism in financial markets. *Journal of Financial Economics* 62, 247-292.

## APPENDIX

### A1. The Full Faith and Credit Guarantee

As discussed in Section 3, the timely payment of principal and interest on bonds issued under the Temporary Liquidity Guarantee Program administered by the Federal Deposit Insurance Corporation is guaranteed by the full faith and credit of the U.S. Government. In this section, we provide additional legislative background about the source of this guarantee.

Specifically, the FDIC has the ability to make guarantee programs subject to the full faith and credit of the United States Government pursuant to Section 15(d) of the Federal Deposit Insurance Act (12 U.S.C. 1825(d)). Section 15(d) states that:

*(d) FULL FAITH AND CREDIT.—The full faith and credit of the United States is pledged to the payment of any obligation issued after [August 9, 1989], the date of the enactment of the Financial Institutions Reform, Recovery, and Enforcement Act of 1989 by the Corporation, with respect to both principal and interest, if—*

*(1) the principal amount of such obligation is stated in the obligation; and*

*(2) the term to maturity or the date of maturity of such obligation is stated in the obligation.*

The term obligation is also formally defined within Section 15:

*the term ‘obligation’ includes—(i) any guarantee issued by the Corporation, other than deposit guarantees;*

Thus, there is a clear legislative path by which the full faith and credit pledge for the Temporary Liquidity Guarantee Program can be established and that path existed prior to the onset of the 2008 financial crisis. The Temporary Liquidity

Guarantee Program clearly meets both the test of being an obligation under the formal definition of that term, as well as having the principal amount and date of maturity stated within the obligation itself given that each bond had a defined principal amount and date of maturity.

The Final Rule issued by the FDIC also makes clear that the guarantee provides that the promised coupon payments and principal amount of bonds issued under this program are paid as scheduled even if the underlying issuer defaults. From the Final Rule:

*However, after considering the comments relevant to the payment of claims under the Debt Guarantee Program, the FDIC has significantly altered the Amended Interim Rule with respect to the method by which the FDIC will satisfy its guarantee obligation on debt issued by institutions and holding companies. These changes are designed to provide assurances to the holders of guaranteed debt that they will continue to receive timely payments following payment default . . .*

Furthermore, in the definition section of the document (specifically, Section 370.12), the Final Rule states in the “Method of Payment” subsection that:

*Upon the occurrence of a payment default, the FDIC shall satisfy its guarantee obligation by making scheduled payments of principal and interest pursuant to the terms of the debt instrument through maturity (without regard to default or penalty provisions).*

This sentence in the Final Rule is followed by a qualifying statement that following the scheduled end-date of the program (ultimately, December 31, 2012), the FDIC could decide to make a simple lump sum payment of remaining principal without pre-payment penalty. However, in practice this was never an issue. Despite being permitted, no entity issued guaranteed debt that was scheduled to mature after the end date of the program.

## A2. Estimating Dealer Inventory Holdings

We use TRACE to estimate dealer inventory. Our version of TRACE contains dealer identifiers, allowing us to estimate inventory holdings for each dealer and bond issue. We estimate the inventory of the  $j$ th dealer in the  $i$ th bond on day  $t$  as the cumulative difference between its buys and sells,

$$INV_{i,j,t} = \max(0, INV_{i,j,t-1} + BUY_{i,j,t} - SELL_{i,j,t}). \quad (A1)$$

Dealer inventory is constrained to be nonnegative. Most negative inventory observations occur in the period following a bond's issuance and are an artifact of primary market transactions not being recorded in TRACE. We use the dealer inventory estimates to identify the primary dealer for each bond. Specifically, the dealer with the largest average inventory position in a bond during the previous month is considered as the primary dealer for the bond.

As a robustness test, we also repeat the analysis when inventories are allowed to be negative to accommodate the possibility of short sales. The results are not significantly different because negative inventories tend to be small and occur predominantly during the period immediately following bond issuance.

As a further robustness test and as an alternative to using dealer inventory, we identify the primary dealer as the dealer who handles most of the trading volume in a bond over the previous month. The two alternative procedures identify the same dealer as the primary dealer 65 percent of the time, and the main results are not sensitive to the procedure.

## A3. Estimating Interdealer and Customer Trading Activity

We also use the TRACE data to compute two measures of a bond's trading activity in each month: total customer trading volume and total interdealer trading volume. The customer trading volume reflects all trades in which a dealer buys or sells from a non-dealer counterparty. The interdealer trading volume reflects trading activity in the interdealer market.

#### A4. State Income Tax Effects

Appendix C of Elton, Gruber, Agrawal, and Mann (2001) shows that the effect of state income taxes on the yield of a one-period coupon bond is proportional to  $c \tau_s (1 - \tau)$  (using our notation). To extend their analysis to longer maturity bonds, consider a  $N$ -year Treasury bond with coupon rate  $c$  that trades at par. Recall that the yield to maturity on a coupon bond trading at par is the coupon rate of the bond. Now consider a  $N$ -year guaranteed corporate bond with the same coupon rate  $c$ , but which is subject to state income taxes. From an investor's after-tax perspective, the corporate bond is equivalent to a Treasury bond which pays a coupon of only  $c (1 - \tau_s (1 - \tau))$ . Thus, for small values of the marginal state income tax rate, the difference in yields between the bonds can be closely approximated by  $c \tau_s (1 - \tau)$ .

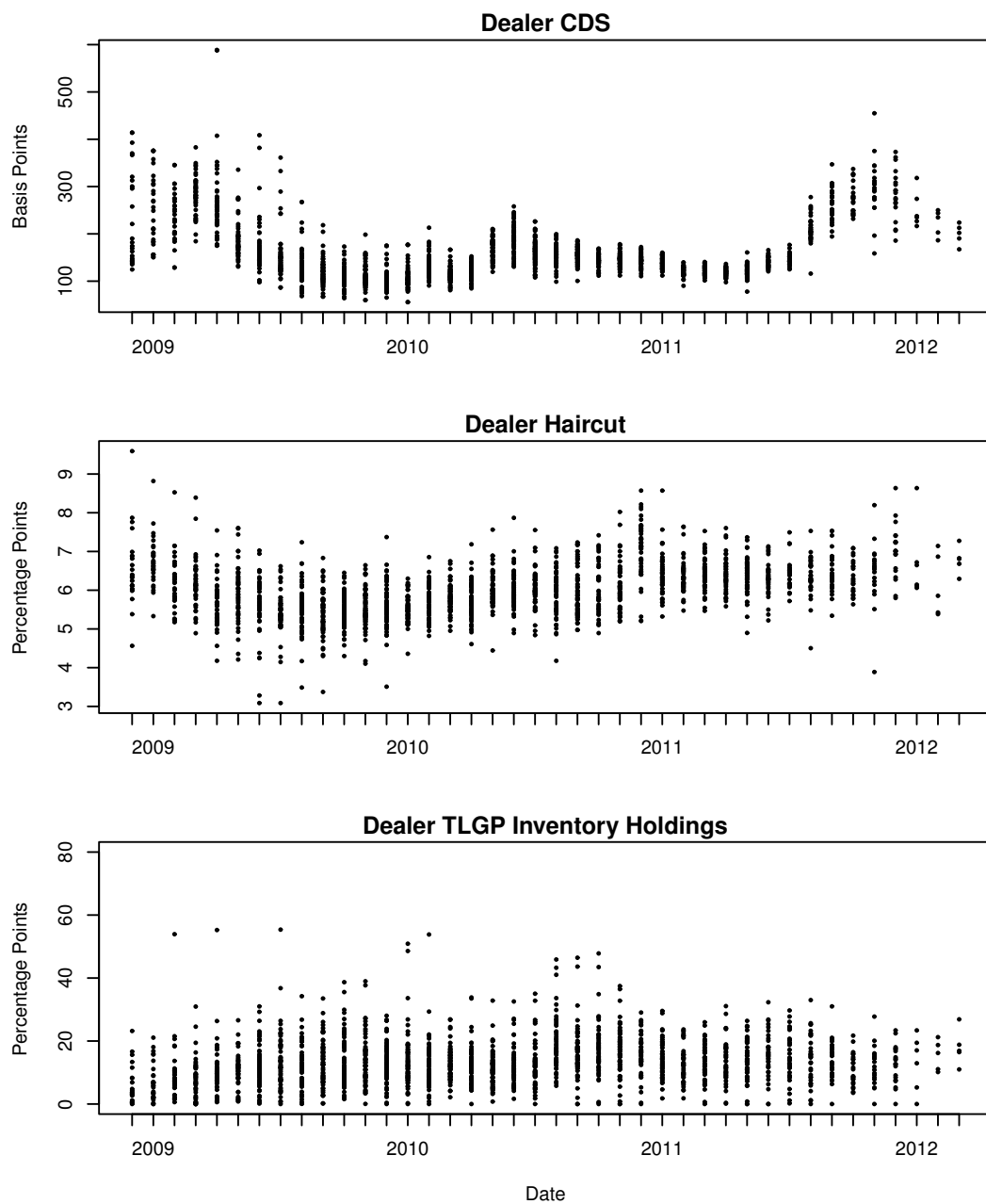
Given this representation of the state income tax effect, we can now estimate the value of  $\tau_s (1 - \tau)$  directly from a simple cross-sectional regression. Specifically, we regress the yield spreads described in Section 5 on the coupon rate for the bonds in a simple time series panel regression. The coefficient on the coupon rate provides a direct estimate of the marginal state income tax rate  $\tau_s (1 - \tau)$ . The regression results are reported in the Internet Appendix. The estimated regression coefficient is 1.655 percent, which is statistically significant with a  $t$ -statistic of 3.95.

We note, however that 98.44 percent of the price observations in the sample are premium prices. As discussed by Liu, Shi, Wang, and Wu (2007), premium amortization may mitigate the impact of state income taxes on bond prices. There are several reasons, however, why premium amortization may not have a material effect on the estimated state income tax effect on yield spreads. First of all, while Section 171 of the Internal Revenue Code allows taxpayers to amortize the premium on bonds acquired at a price above par, this is actually an optional election rather than a mandatory requirement. Industry sources suggest that relatively few taxpayers have elected to make this election historically. For example, see <http://tscpfederal.typepad.com/blog/2015/01/problems-with->

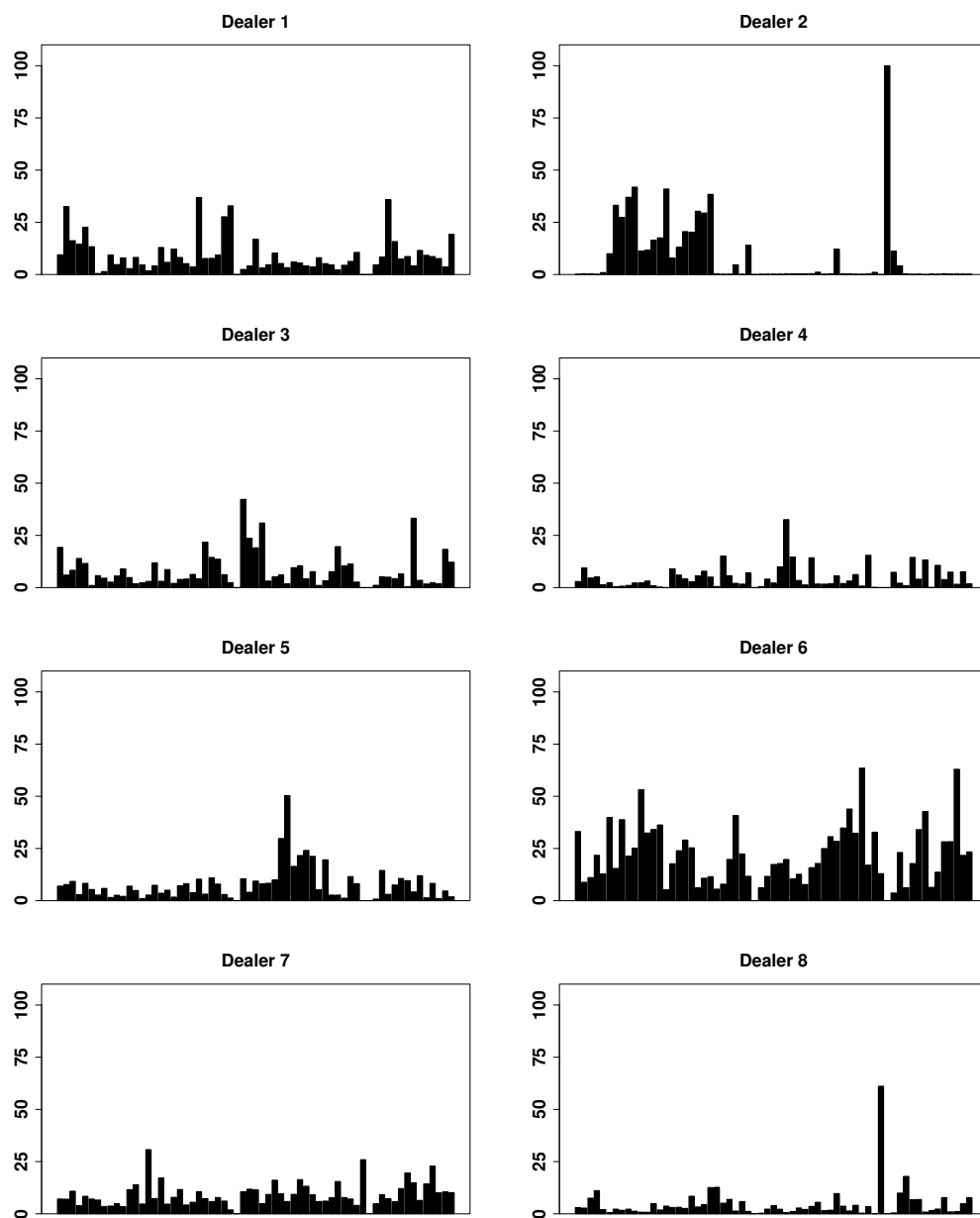


[new-irs-bond-premium-amortization-rules.html](#). This is particularly likely in the case of the guaranteed TLGP bonds we study in light of the relatively small size of the average premium for these bonds (and the discounted status of many other bonds in the market).

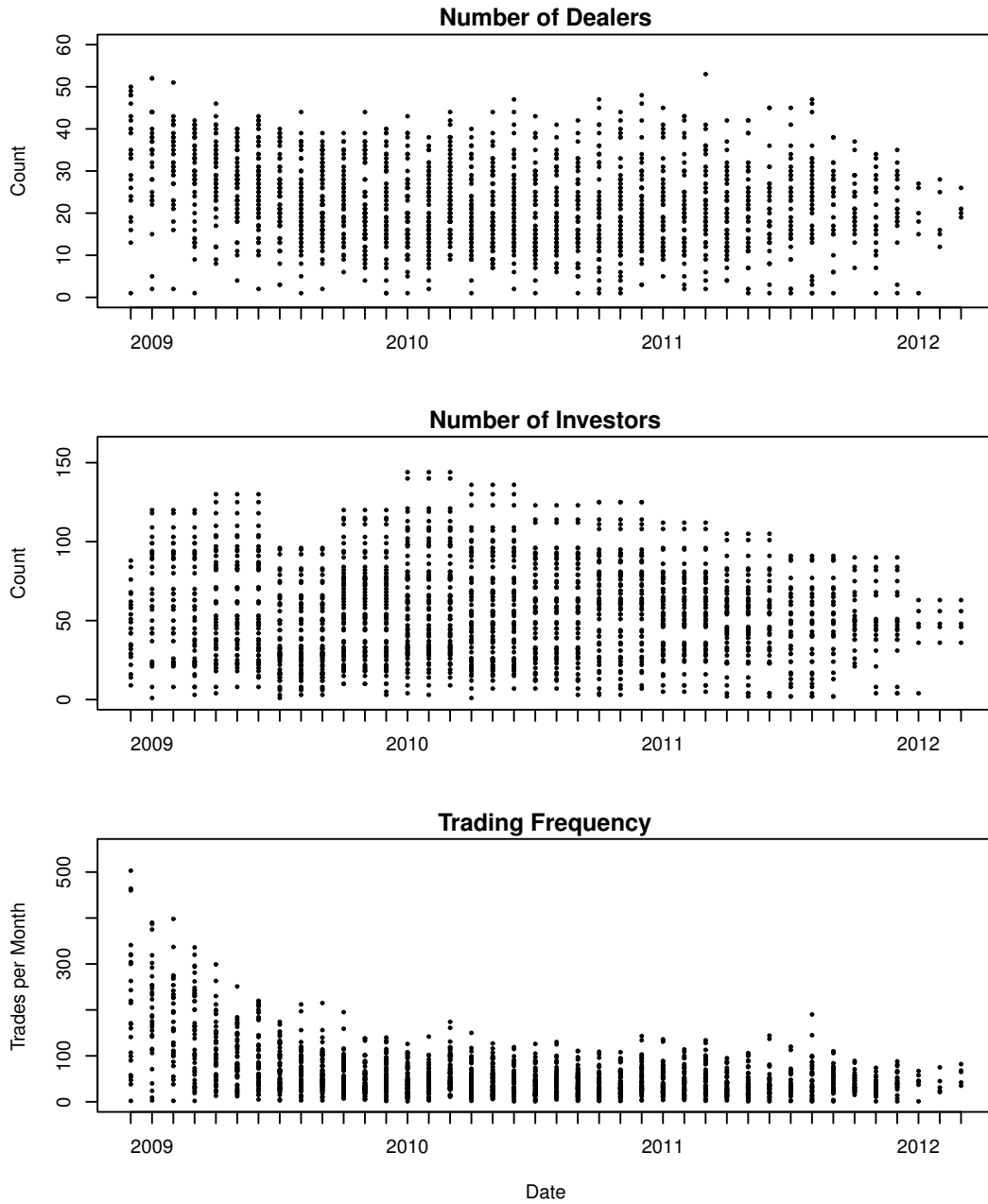
Second, even if the amortization election were to be made by investors, it is clear that the impact of state income taxes on corporate bonds would generally be smaller when the premium is amortized than when it is not. Intuitively, this is because the amortization election allows the bondholder to deduct the premium amortization amount and reduce the taxable coupon income. Because of this, our estimates of the magnitude of state income tax effects on the yield of the TLGP bonds will typically represent upper bounds on the size of the actual tax effects. Using our methodology, we estimate that impact of state income taxes on TLGP bonds is 3.8 basis point on average. In contrast, if the premium is amortized, the actual effect could be significantly less. Thus, our results about the magnitude of mispricing are likely on the conservative side.



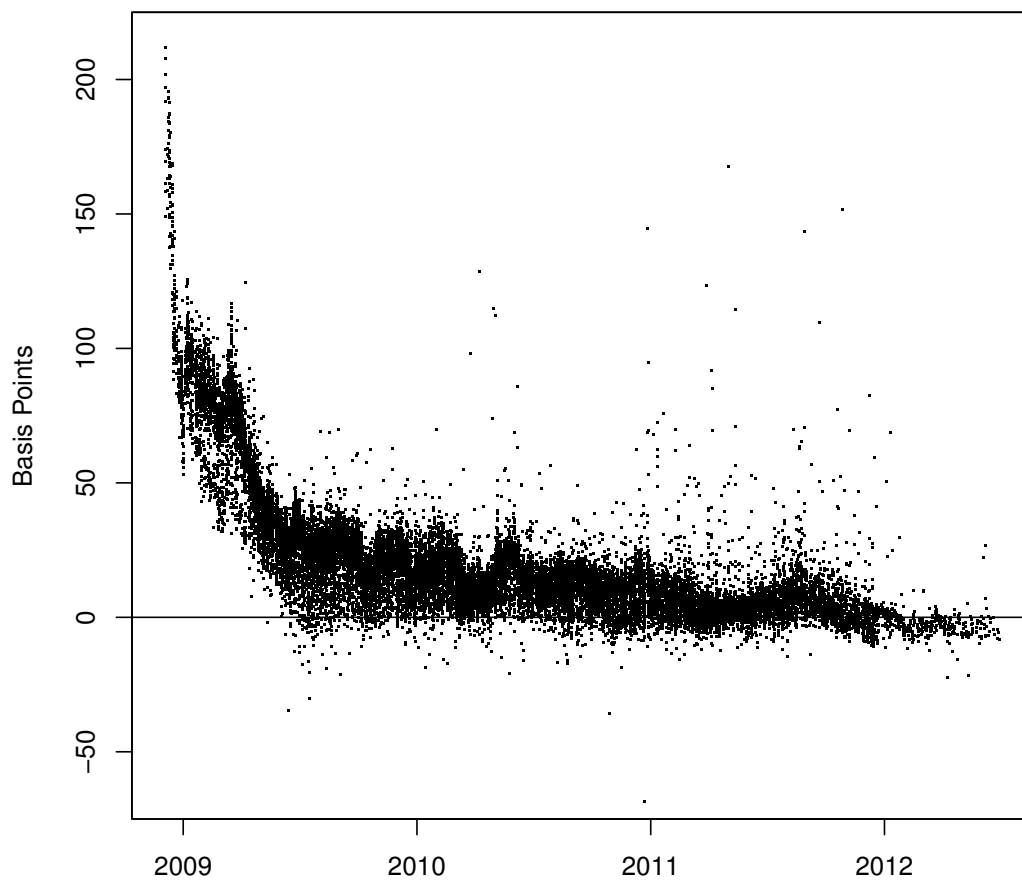
**Figure 1. Cross-Sectional Distribution of Dealer CDS Spreads, Dealer Haircuts, and Dealer Inventory.** This figure plots the monthly cross-section of the indicated variables for the individual guaranteed bonds.



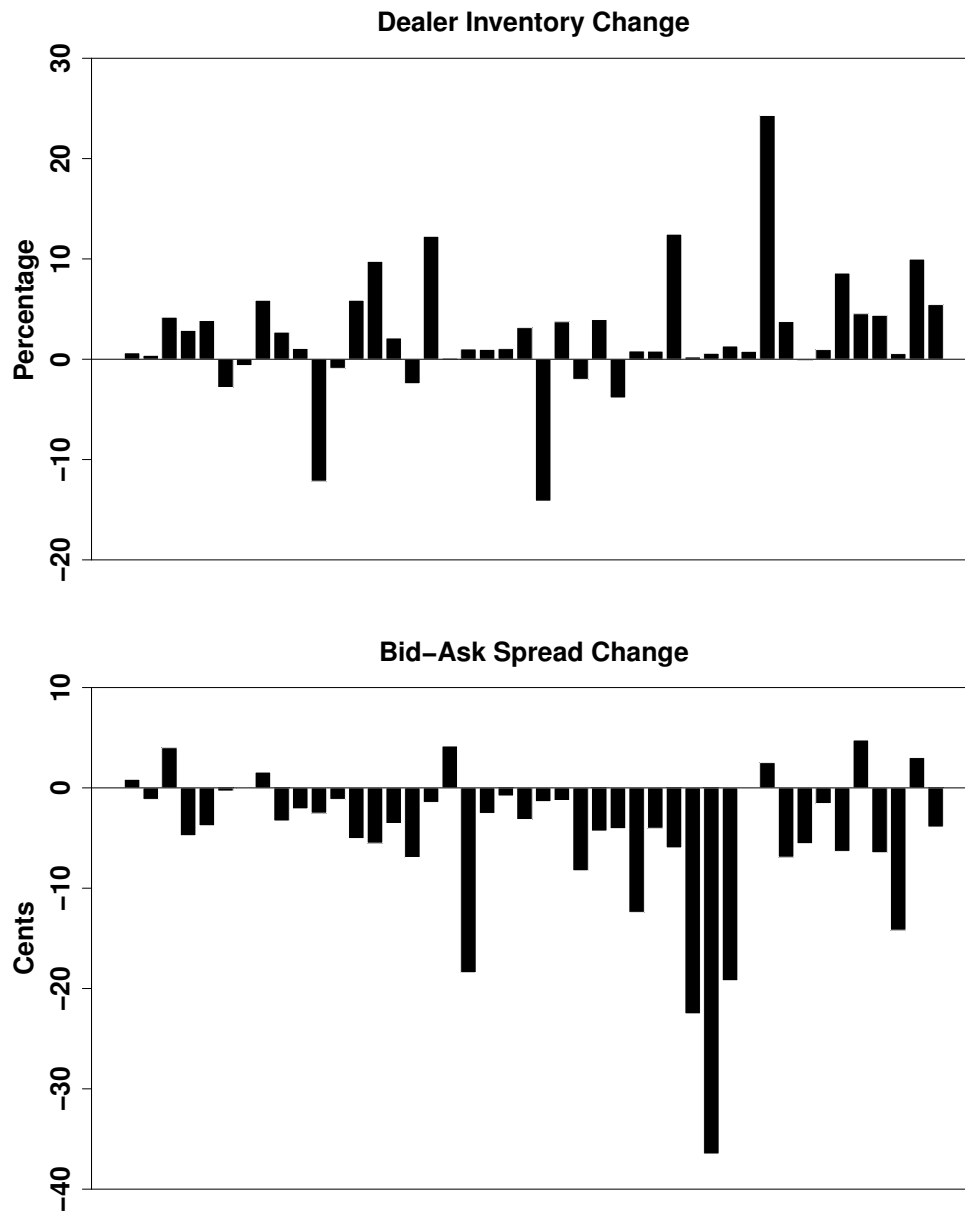
**Figure 2. Average Inventory Holdings of Top Primary Dealers.** This figure plots the average inventory holdings of the top eight primary dealers for each of the individual guaranteed bonds as a percentage of the total inventory held by dealers for each bond.



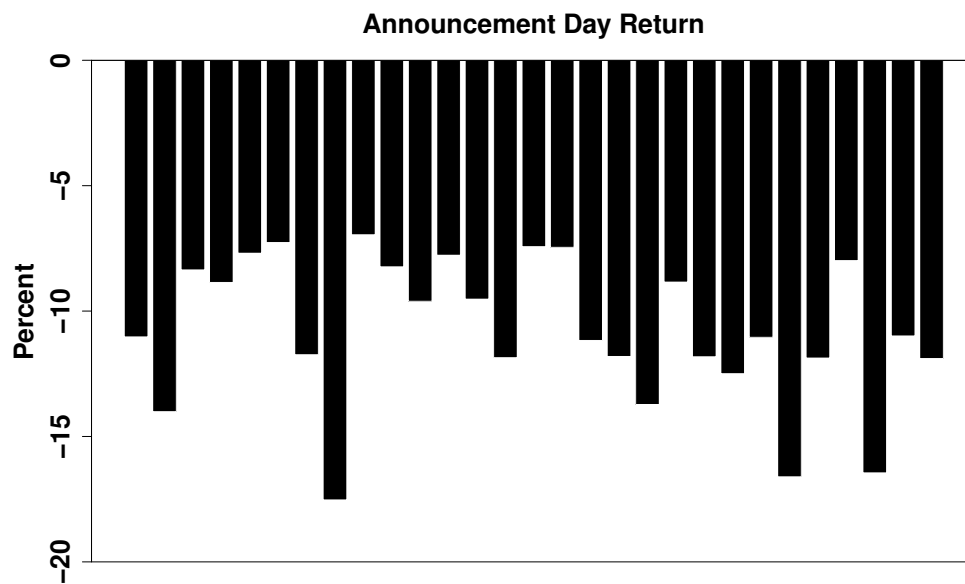
**Figure 3. Cross-Sectional Distribution of the Number of Dealers, Number of Institutional Investors, and Trading Frequencies.** This figure plots the monthly cross-section of the indicated variables for the individual guaranteed bonds. Trading frequency is the number of times a bond trades during a month.



**Figure 4. Mispricing of Individual Bonds.** This figure plots the mispricing of the individual guaranteed bonds over time. Mispricing is measured in basis points.



**Figure 5. Changes in Dealer Inventory and Bid-Ask Spread Associated with the GCF Inclusion Event.** The upper panel plots the percentage change in the amount of inventory held by primary dealers for each of the bonds in the sample during April 2009. The lower panel plots the change in the bid-ask spread for each of the bonds in the sample during April 2009.



**Figure 6. Dealer Stock Returns on the Announcement Date of the SCAP Stress Test Program.** This figure plots the inventory-weighted average dealer stock return on the February 10, 2009 announcement date of the SCAP Stress Test Program for each of the bonds in the sample at the end of January 2009.

Table 1

**Descriptive Statistics for the Guaranteed Bonds.** This table presents descriptive statistics for the individual guaranteed bonds. Statistics are time series averages of month-end values for each bond. Issue size is in billions of dollars. Dealer CDS and Dealer Haircut are inventory-weighted averages for the primary dealers and are expressed in basis points and percentages, respectively. Dealer Inventory is total dealer inventory as a percentage of the issue size. Num of Dealers denotes the average number of dealers that execute trades in a bond. Num of Invest denotes the average number of institutional investors holding positions in the bonds. Dealer Central denotes the ratio of primary dealer inventory to total dealer inventory. Ratio of Volumes denotes the ratio of dealer trading volume to total trading volume.  $N$  denotes the number of observations. The sample is monthly from December 2008 to June 2012.

Issuer	Coupon	Maturity	Issue Size	Dealer CDS	Dealer Haircut	Dealer Inventory	Num of Dealers	Num of Invest	Dealer Central	Ratio of Volumes	$N$
American Express	3.150	12-2011	3.50	138.04	5.78	6.59	18.44	68.80	0.40	0.19	25
Bank of America	2.100	04-2012	6.00	156.74	6.27	10.13	28.06	94.85	0.28	0.25	34
Bank of America	3.125	06-2012	8.25	159.04	6.15	8.49	39.41	111.11	0.39	0.27	37
Bank of America	2.375	06-2012	2.00	168.94	5.95	17.07	22.91	47.88	0.32	0.26	34
Bank of America NA	1.700	12-2010	3.75	135.93	5.55	11.07	24.63	38.63	0.40	0.35	19
Bank of the West	2.150	03-2012	1.00	176.17	5.98	10.80	9.77	29.94	0.57	0.26	31
Citibank	1.625	03-2011	1.00	140.89	5.81	16.85	12.06	18.06	0.47	0.33	16
Citibank	1.500	07-2011	1.75	141.23	5.48	15.40	14.16	27.00	0.25	0.28	19
Citibank	1.375	08-2011	2.50	147.93	6.02	8.15	18.39	27.83	0.51	0.14	18
Citibank	1.250	09-2011	1.50	146.41	6.26	10.81	15.21	23.47	0.68	0.20	19
Citibank	1.250	11-2011	1.25	150.04	6.13	21.35	12.00	15.75	0.62	0.25	20
Citibank	1.875	05-2012	2.25	167.92	5.95	13.44	18.00	42.87	0.51	0.21	30
Citibank	1.875	06-2012	1.30	175.73	6.21	8.54	10.17	31.80	0.48	0.30	30
Citigroup	1.375	05-2011	2.30	152.32	5.58	18.22	14.83	33.89	0.36	0.31	18
Citigroup	1.250	06-2011	1.40	135.78	6.05	9.63	10.72	14.06	0.42	0.39	18
Citigroup	2.875	12-2011	3.75	150.75	6.00	12.34	36.50	85.80	0.43	0.31	30
Citigroup	2.000	03-2012	1.00	179.00	6.29	17.26	14.42	33.00	0.65	0.35	31
Citigroup	2.125	04-2012	8.00	193.66	6.07	10.51	31.74	92.79	0.57	0.31	34
Citigroup	2.125	07-2012	1.75	184.86	6.24	10.00	14.68	49.23	0.69	0.22	31
Citigroup	1.875	10-2012	5.00	164.80	6.23	15.52	25.16	86.13	0.65	0.30	31
Citigroup	1.875	11-2012	2.50	172.79	6.35	14.82	16.00	51.30	0.72	0.25	30
Citigroup	2.250	12-2012	2.50	170.85	6.33	20.27	26.91	69.53	0.72	0.27	32
General Electric	1.625	01-2011	2.50	140.09	5.46	13.99	26.39	24.17	0.29	0.37	18
General Electric	1.800	03-2011	4.95	136.73	5.58	14.38	27.06	51.89	0.31	0.36	18
General Electric	3.000	12-2011	4.90	142.44	5.92	13.53	36.77	94.23	0.42	0.34	30
General Electric	2.250	03-2012	2.92	160.87	5.94	19.12	21.20	52.30	0.41	0.27	30
General Electric	2.200	06-2012	4.50	172.73	6.27	11.94	31.86	79.14	0.38	0.27	35
General Electric	2.000	09-2012	3.65	188.06	6.62	18.64	19.47	59.81	0.45	0.23	32
General Electric	2.450	12-2012	0.15	179.26	7.07	0.00	1.25	4.13	0.00	0.12	8



Table 1 Continued

Issuer	Coupon	Maturity	Issue Size	Dealer CDS	Dealer Haircut	Dealer Inventory	Num of Dealers	Num of Invest	Dealer Central	Ratio of Volumes	<i>N</i>
Goldman Sachs	1.700	03-2011	1.00	139.14	5.65	26.59	16.94	19.89	0.63	0.26	18
Goldman Sachs	1.625	07-2011	3.50	152.66	5.83	13.45	33.58	58.63	0.35	0.35	24
Goldman Sachs	2.150	03-2012	1.00	150.84	6.09	14.36	14.37	25.97	0.37	0.29	30
Goldman Sachs	3.250	06-2012	5.50	161.70	6.05	14.88	40.24	112.08	0.47	0.27	37
HSBC	3.125	12-2011	2.33	124.35	6.22	12.94	17.74	59.90	0.41	0.23	31
John Deere	2.875	06-2012	2.00	150.58	6.03	15.93	33.78	95.62	0.41	0.25	37
JP Morgan Chase	2.625	12-2010	3.00	113.70	5.55	15.20	33.72	39.67	0.26	0.45	18
JP Morgan Chase	1.650	02-2011	2.00	109.02	5.53	19.60	22.53	28.68	0.36	0.30	19
JP Morgan Chase	3.125	12-2011	5.00	131.39	5.92	11.48	38.87	87.17	0.40	0.31	30
JP Morgan Chase	2.200	06-2012	3.00	153.50	6.03	12.40	25.69	63.57	0.56	0.22	35
JP Morgan Chase	2.125	06-2012	3.00	150.62	5.77	14.42	23.35	61.05	0.36	0.25	37
JP Morgan Chase	2.125	12-2012	2.30	156.60	5.98	22.37	30.53	62.00	0.38	0.31	36
Keybank	3.200	06-2012	1.00	180.21	5.95	19.18	21.92	60.41	0.41	0.22	37
Morgan Stanley	2.900	12-2010	2.50	165.90	5.33	16.45	26.78	31.50	0.43	0.43	18
Morgan Stanley	2.000	09-2011	2.50	177.95	5.75	9.43	21.25	42.61	0.38	0.26	28
Morgan Stanley	3.250	12-2011	3.25	156.65	6.01	12.60	21.50	77.23	0.48	0.29	30
Morgan Stanley	2.250	03-2012	2.00	166.14	6.00	19.48	14.17	41.90	0.38	0.19	30
Morgan Stanley	1.950	06-2012	3.00	160.48	6.00	7.33	18.56	63.58	0.63	0.19	36
NY Comm Bank	3.000	12-2011	0.51	178.52	6.03	5.73	13.03	20.83	0.28	0.18	30
NY Comm Bank	2.550	06-2012	0.09	237.53	6.18	1.04	2.46	8.92	0.58	0.16	13
Oriental Bank	2.750	03-2012	0.11	199.13	6.89	0.53	2.07	2.50	0.43	0.22	14
PNC	1.875	06-2011	0.50	174.29	5.71	10.14	12.92	19.48	0.50	0.17	25
PNC	2.300	06-2012	2.00	164.62	5.96	10.54	26.68	87.57	0.33	0.22	37
Regions Bank	2.750	12-2010	1.00	148.25	5.59	25.18	22.89	17.78	0.45	0.46	18
Regions Bank	3.250	12-2011	1.99	138.27	6.10	16.40	28.10	80.13	0.31	0.28	30
Sovereign Bank	2.750	01-2012	1.35	170.38	5.92	11.03	15.91	53.13	0.41	0.25	32
Sovereign Bank	2.500	06-2012	0.25	194.32	5.90	5.45	5.17	6.23	0.79	0.20	35
State Street	1.850	03-2011	1.00	137.90	5.43	18.93	16.56	25.78	0.50	0.22	18
State Street	2.150	04-2012	1.50	149.72	6.08	12.53	20.41	69.44	0.34	0.23	32
Suntrust	3.000	11-2011	2.24	169.45	5.92	7.14	21.33	52.37	0.37	0.23	30
US Bancorp	2.250	03-2012	1.10	145.43	6.04	10.75	25.63	32.43	0.38	0.23	30
US Bancorp	1.800	05-2012	1.08	167.79	5.98	7.53	12.93	26.20	0.63	0.20	30
Wells Fargo	3.000	12-2011	3.00	153.34	5.81	19.16	36.63	85.57	0.33	0.31	30
Wells Fargo	2.125	06-2012	1.75	169.26	6.26	12.16	17.91	49.29	0.35	0.28	34
Average				159.20	5.98	13.19	21.18	49.06	0.44	0.27	27

Table 2

**Summary Statistics for the Mispricing of the Guaranteed Bonds.** This table presents summary statistics for the mispricing of the guaranteed bonds in the sample. The mispricing is measured as the basis point yield spread of the guaranteed bonds in the sample over Treasury bonds, adjusted for the effect of state income taxes. The columns titled 10%, 50%, and 90% denote the 10th, 50th, and 90th percentiles of the distribution.  $N$  denotes the number of observations. The sample is daily from December 1, 2008 to June 28, 2012.

Issuer	Coupon	Maturity	Mean	St. Dev	10%	50%	90%	$N$
American Express	3.150	12-2011	12.83	16.93	-0.33	10.32	24.40	411
Bank of America	2.100	04-2012	21.33	22.18	0.96	15.74	47.21	643
Bank of America	3.125	06-2012	24.56	28.19	2.78	15.66	72.56	736
Bank of America	2.375	06-2012	16.84	16.99	0.44	13.37	34.39	487
Bank of America NA	1.700	12-2010	18.65	25.40	-1.64	7.47	59.69	337
Bank of the West	2.150	03-2012	18.78	17.85	0.08	14.97	40.05	263
Citibank	1.625	03-2011	9.75	10.33	-1.59	8.35	21.46	167
Citibank	1.500	07-2011	12.74	10.26	-1.69	12.81	25.54	236
Citibank	1.375	08-2011	10.72	9.83	-2.36	10.32	23.08	280
Citibank	1.250	09-2011	8.42	8.96	-2.45	6.95	20.15	227
Citibank	1.250	11-2011	10.52	8.04	0.29	9.74	21.64	212
Citibank	1.875	05-2012	17.82	12.55	2.19	15.93	36.88	399
Citibank	1.875	06-2012	16.66	12.62	0.65	15.39	35.04	278
Citigroup	1.375	05-2011	12.84	10.75	-1.06	11.60	26.53	244
Citigroup	1.250	06-2011	12.12	10.94	-3.11	14.48	23.57	131
Citigroup	2.875	12-2011	26.76	30.61	2.15	17.17	79.53	572
Citigroup	2.000	03-2012	20.06	17.80	-0.06	15.54	41.56	340
Citigroup	2.125	04-2012	22.77	22.13	1.88	17.02	47.46	651
Citigroup	2.125	07-2012	14.81	11.18	1.03	13.40	30.67	425
Citigroup	1.875	10-2012	15.14	11.27	0.39	15.23	31.50	570
Citigroup	1.875	11-2012	12.86	10.20	-1.81	13.09	28.14	430
Citigroup	2.250	12-2012	14.10	10.96	-1.10	14.07	27.98	605
General Electric	1.625	01-2011	20.14	21.39	2.25	10.33	56.84	323
General Electric	1.800	03-2011	16.11	17.88	-0.60	11.20	38.66	341
General Electric	3.000	12-2011	26.73	30.42	2.98	17.32	83.04	615
General Electric	2.250	03-2012	19.14	18.91	0.80	15.03	40.26	498
General Electric	2.200	06-2012	23.32	22.99	3.29	17.41	54.19	678
General Electric	2.000	09-2012	13.29	10.72	-0.66	12.89	28.74	533
General Electric	2.450	12-2012	14.62	13.74	2.42	11.90	44.51	9

Table 2 Continued

Issuer	Coupon	Maturity	Mean	St. Dev	10%	50%	90%	N
Goldman Sachs	1.700	03-2011	13.94	16.50	0.16	8.20	41.24	256
Goldman Sachs	1.625	07-2011	19.07	20.74	-0.99	14.47	56.38	469
Goldman Sachs	2.150	03-2012	17.23	17.90	-0.03	13.37	35.40	325
Goldman Sachs	3.250	06-2012	24.21	27.44	2.13	15.84	69.10	740
HSBC	3.125	12-2011	23.47	28.10	0.56	13.53	77.62	526
John Deere	2.875	06-2012	22.05	23.55	2.05	14.40	64.02	681
JP Morgan Chase	2.625	12-2010	21.02	29.04	-0.63	8.10	60.88	342
JP Morgan Chase	1.650	02-2011	16.11	17.89	1.35	9.31	46.58	296
JP Morgan Chase	3.125	12-2011	25.11	30.69	3.95	14.34	75.12	614
JP Morgan Chase	2.200	06-2012	19.36	18.20	2.14	15.36	40.33	559
JP Morgan Chase	2.125	06-2012	23.12	23.59	1.39	16.41	65.52	607
JP Morgan Chase	2.125	12-2012	11.97	11.16	-0.67	10.77	24.14	728
Keybank	3.200	06-2012	22.83	25.63	0.55	15.32	69.14	600
Morgan Stanley	2.900	12-2010	22.61	30.87	0.00	10.20	60.42	351
Morgan Stanley	2.000	09-2011	21.73	27.54	-0.40	11.66	72.89	476
Morgan Stanley	3.250	12-2011	25.98	32.09	1.66	14.70	77.46	553
Morgan Stanley	2.250	03-2012	19.38	19.04	1.28	14.88	41.19	424
Morgan Stanley	1.950	06-2012	21.21	21.98	2.05	15.32	54.64	568
NY Comm Bank	3.000	12-2011	37.30	37.38	1.46	22.35	99.11	291
NY Comm Bank	2.550	06-2012	19.48	28.34	-1.95	12.94	49.28	29
Oriental Bank	2.750	03-2012	40.33	38.16	4.66	25.60	107.54	29
PNC	1.875	06-2011	26.47	29.58	-3.47	18.06	77.73	243
PNC	2.300	06-2012	22.22	23.83	1.39	14.79	66.99	647
Regions Bank	2.750	12-2010	23.92	30.96	-0.32	10.09	65.56	278
Regions Bank	3.250	12-2011	26.43	32.09	0.96	15.86	84.46	552
Sovereign Bank	2.750	01-2012	27.69	30.55	1.93	16.29	87.95	418
Sovereign Bank	2.500	06-2012	29.69	29.06	2.26	19.87	81.52	159
State Street	1.850	03-2011	13.81	16.20	-0.72	9.35	35.62	250
State Street	2.150	04-2012	18.64	19.89	0.34	14.69	40.64	517
Suntrust	3.000	11-2011	24.99	29.21	0.72	16.24	79.43	517
US Bancorp	2.250	03-2012	16.76	17.17	-0.32	13.60	34.54	409
US Bancorp	1.800	05-2012	15.05	11.76	1.47	13.78	31.59	314
Wells Fargo	3.000	12-2011	22.95	25.72	2.44	15.24	68.81	585
Wells Fargo	2.125	06-2012	14.45	13.29	0.27	11.86	29.97	488
All			20.07	23.13	0.71	14.07	46.58	26482

Table 3

**Panel Regression of Mispricing on Price Risk, Intermediary, Network, and Liquidity Variables.** This table reports the results from the panel regression of mispricing on the indicated variables. Mispricing is measured in basis points. Coupon is expressed as a percentage. Issuer and dealer CDS spreads are measured in basis points. Duration is measured in years. Dealer haircut is expressed as a percentage. Number of dealers denotes the number of dealers executing trades in the bond during the month. Number of institutions denotes the number of financial institutions holding positions in the bond as of the end of the month. Dealer centrality denotes the fraction of total dealer inventory held by the primary dealer for the bond. Dealer share of volume denotes the trading volume of dealers divided by total trading volume. Age is expressed in years. Issue size denotes the logarithm of the total par amount of the bond outstanding expressed in billions of dollars. Bid-ask spread is measured in cents per 100 dollar par amount. The *t*-statistics are based on robust standard errors clustered by bond. The superscripts \* and \*\* denote significance at the ten-percent and five-percent levels, respectively. The sample is monthly from December 2008 to June 2012.

Category	Variable	Coeff.	<i>t</i> -Stat
Controls	Coupon	0.3130	0.35
	Issuer CDS	0.0044	1.10
Price Risk	Duration	9.1312	7.61**
Intermediary	Dealer CDS	0.0396	3.91**
	Dealer Haircut	1.4969	2.50**
Network	Number of Dealers	-0.1000	-2.07**
	Number of Institutions	0.0358	1.65
	Dealer Centrality	-3.2347	-1.88*
	Dealer Share of Volume	-2.9168	-2.61**
Liquidity	Age	-0.1966	-0.10
	Issue Size	-0.9945	-1.36
	Bid-Ask Spread	-0.5530	-0.06
	Amihud Measure	-0.1789	-0.56
Monthly Fixed Effects			Yes
Adjusted $R^2$			0.873
Number of Observations			1,727

Table 4

**Panel Regression of Mispricing on Near-Money-Premium Variables.** This table reports the results from the panel regression of mispricing on the repo spread (the three-month repo rate minus the three-month Treasury bill rate) interacted with duration, on the AAA spread (the yield on ten-year AAA corporate bonds minus the ten-year AAA Treasury yield) interacted with duration, and on duration. Mispricing, repo spread, and AAA spread are measured in basis points. Duration is measured in years. The  $t$ -statistics are based on robust standard errors clustered by bond. The superscripts \* and \*\* denote significance at the ten-percent and five-percent levels, respectively. The sample period is monthly from December 2008 to June 2012.

Variable	Coefficient	$t$ -Stat
Duration	-5.2129	-1.23
Duration $\times$ Repo Spread	0.2641	2.14**
Duration $\times$ AAA Spread	0.0581	2.71**
Monthly Fixed Effects		Yes
Adjusted $R^2$		0.866
Number of Observations		1,727

Table 5

**Panel Regression of Changes in Dealer Inventory on Changes in Dealer CDS Spreads and Haircuts.** This table reports the results from the panel regression of changes in dealer inventory on its lagged values and on contemporaneous and lagged changes in dealer CDS spreads and dealer haircuts. Dealer inventory is expressed as a percentage of the size of the bond issue. Dealer CDS spread is measured in basis points. Dealer haircut is measured as a percentage. The  $t$ -statistics are based on robust standard errors clustered by bond. The superscripts \* and \*\* denote significance at the ten-percent and five-percent levels, respectively. The sample period is monthly from December 2008 to June 2012.

Variable	Coefficient	$t$ -Stat
Intercept	0.2818	2.81**
Change in Dealer Inventory $t-1$	-0.3762	-4.65**
Change in Dealer Inventory $t-2$	-0.1269	-2.07**
Change in Dealer Inventory $t-3$	-0.0491	-1.16
Change in Dealer CDS $t$	-0.0131	-2.64**
Change in Dealer CDS $t-1$	-0.0136	-3.39**
Change in Dealer CDS $t-2$	-0.0026	-0.46
Change in Dealer CDS $t-3$	0.0062	1.92*
Change in Dealer Haircut $t$	-0.4253	-0.95
Change in Dealer Haircut $t-1$	-0.2343	-0.74
Change in Dealer Haircut $t-2$	-0.9242	-2.35**
Change in Dealer Haircut $t-3$	-0.5535	-2.11**
Adjusted $R^2$		0.101
Number of Observations		1,451

Table 6

**Instrumental Variables Regression of Changes in Mispricing on Changes in Dealer Inventory.** This table reports the estimates from the second stage of a two-stage least squares regression of changes in mispricing on instrumented changes in dealer inventory and on changes in dealer CDS spreads and dealer haircuts. Changes in dealer inventory are instrumented with changes in dealer inventory holdings of non-TLGP corporate bonds and three lags of TLGP inventory changes. Mispricing is measured in basis points. Dealer CDS spread is measured in basis points. Dealer haircut is expressed as a percentage. The *t*-statistics are based on robust standard errors clustered by bond. The superscripts \* and \*\* denote significance at the ten-percent and five-percent levels, respectively. The sample is monthly from December 2008 to June 2012.

Variable	Coefficient	<i>t</i> -Stat
Intercept	-1.8444	-14.84**
Instrumented Change in Dealer Inventory	-0.4398	-1.70*
Change in Dealer CDS Spread	0.0333	4.27**
Change in Dealer Haircut	2.1983	3.63**
Number of Observations		1,451

Table 7

**Cross-Sectional Regression of the Change in Mispricing Following the GCF Repo Eligibility Event.** This table reports the results from the regression of the change in mispricing during the month of April 2009 on the indicated equity, leverage, and liquidity variables measured at end of March 2009. Mispricing is denoted in basis points. Dealer CDS spreads are measured in basis points. Dealer haircuts are measured as percentages. Bid-ask spreads are measured in cents per 100 par amount. Number of dealers denotes the number of dealers that execute trades in a bond. Issue size denotes the logarithm of the total par amount of the bond outstanding measured in billions of dollars. The  $t$ -statistics are based on robust standard errors. The superscripts \* and \*\* denote significance at the ten-percent and five-percent levels, respectively.

Variable	Coefficient	$t$ -Stat
Intercept	48.7544	3.49**
Dealer CDS Spread	-0.0652	-2.09**
Dealer Haircut	-9.1159	-3.95**
Bid-Ask Spread	0.0394	0.25
Number of Dealers	-0.0442	-0.29
Issue Size	-5.8038	-1.31
Adjusted $R^2$		0.372
Number of Observations		44



Table 8

**Cross-Sectional Regression of the Change in Mispricing Following the Stress Test Announcement Event.** This table reports the results from the regression of the change in mispricing during the month of February 2009 on the dealer capital shock resulting from the announcement of the stress tests on February 10, 2009 and the indicated equity, leverage, and liquidity variables measured at end of January 2009. Mispricing is denoted in basis points. Dealer capital shock denotes the inventory-weighted average dealer stock return for each bond on the announcement date of February 10, 2009. Dealer CDS spreads are measured in basis points. Dealer haircuts are measured as percentages. Bid-ask spreads are measured in cents per 100 par amount. Number of dealers denotes the number of dealers that execute trades in a bond. Issue size denotes the logarithm of the total par amount of the bond outstanding measured in billions of dollars. The  $t$ -statistics are based on robust standard errors. The superscripts \* and \*\* denote significance at the ten-percent and five-percent levels, respectively.

Variable	Coefficient	$t$ -Stat
Intercept	-20.5362	-2.59**
Feb. 10, 2009 Dealer Capital Shock	-1.0115	-2.28**
Dealer CDS Spread	-0.0188	-1.55
Dealer Haircut	0.6056	0.74
Bid-Ask Spread	-0.0890	-0.66
Number of Dealers	-0.0678	-0.49
Issue Size	1.6109	0.84
Adjusted $R^2$		0.165
Number of Observations		29

**Table 9**

**Instrumental Variables Regression of Changes in Mispricing on Trading Frequency.** This table reports the estimates from the second stage of a two-stage least squares regression of changes in mispricing on instrumented trading frequency. Trading frequency is instrumented with dealer trading volume for non-TLGP corporate bonds. Mispricing is measured in basis points. Trading frequency is measured in terms of the number of trades during a month. The  $t$ -statistics are based on robust standard errors clustered by bond. The superscripts \* and \*\* denote significance at the ten-percent and five-percent levels, respectively. The sample is monthly from December 2008 to June 2012.

Variable	Coefficient	$t$ -Stat
Intercept	3.4822	2.68**
Instrumented Trading Frequency	−0.0987	−4.39**
Number of Observations		1,646

Table 10

**Combined Instrumental Variables Regression of Changes in Mispricing on Changes in Near-Money-Premium Variables, Changes in Dealer Inventory, CDS Spreads, and Haircuts, and Trading Frequency.** This table reports the estimates from the second stage of a two-stage least squares regression of changes in mispricing on the interaction between duration and changes in the repo and AAA spreads, instrumented changes in dealer inventory, changes in dealer CDS spreads and haircuts, and on instrumented trading frequency. Changes in dealer inventory are instrumented with changes in dealer inventory holdings of non-TLGP corporate bonds and three lags of TLGP inventory changes. Trading frequency is instrumented with dealer trading volumes for non-TLGP corporate bonds. Mispricing is measured in basis points. Dealer CDS spreads, repo spreads, and AAA spreads are measured in basis points. Dealer haircut is expressed as a percentage. Dealer inventory is expressed as a percentage of total outstanding amount of the bond issue. Trading frequency is measured in terms of the number of trades during a month. The  $t$ -statistics are based on robust standard errors clustered by bond. The superscripts \* and \*\* denote significance at the ten-percent and five-percent levels, respectively. The sample is monthly from December 2008 to June 2012.

Variable	Coefficient	$t$ -Stat
Intercept	4.7999	2.32**
Duration $\times$ Change in Repo Spread	0.2577	4.85**
Duration $\times$ Change in AAA Spread	0.0514	6.45**
Instrumented Change in Dealer Inventory	-0.5722	-2.45**
Change in Dealer CDS	0.0018	0.16
Change in Dealer Haircut	1.7037	3.07**
Instrumented Trading Frequency	-0.1186	-2.97**
Number of Observations		1,451

## **INTERNET APPENDIX**

### **ASSET MISPRICING**

## 1. Additional Details about the Data

We use a confidential version of the Trade Reporting and Compliance Engine (TRACE) database that contains all over-the-counter trades in publicly traded U.S. corporate bonds, including those issued under the Debt Guarantee Program. We filter out erroneous and duplicate entries using the procedure described in Goldstein, Hotchkiss, and Sirri (2007), which removes 31 percent of TRACE entries that are trade reversals, cancellations, exact duplicates, or inconsistent with reporting guidelines. This version differs from the public version of TRACE in that it explicitly identifies the dealers involved in each transaction and includes the actual size of each transaction. In contrast, the public version of TRACE is subject to a dissemination cap of \$5 million per transaction, and all transactions in excess of \$5 million are disseminated as \$5MM+. An important advantage of this is that we can directly infer the inventory holdings of each dealer in the market for each of the bonds in the sample. Furthermore, the TRACE data set also includes an indicator for whether the transaction is between a dealer and another dealer, or between a dealer and a customer. This allows us to identify both total customer trading volume and total interdealer trading volume for each of the bonds in the sample. The Appendix to the paper describes how dealer inventories and interdealer and customer trading volumes are estimated using the TRACE data. Table IA-1 reports additional summary statistics about the inventory holdings of guaranteed bonds for the individual primary dealers in the study.

We also use a confidential data set from the Federal Reserve Bank of New York that identifies the margin or haircut that each dealer must pay to obtain repo financing for corporate bonds. The haircut affects the amount of capital that a dealer needs to support inventory purchases and is an important determinant of the dealer’s funding liquidity (see Brunnermeier and Pedersen (2009)). This data set consists of disaggregated data on haircuts on corporate bond collateral posted by individual dealers in the tri-party repo market. The tri-party repo market is a key source of short-term secured funding for securities dealers who typically use the market to finance their inventory purchases (see Copeland, Duffie, Martin, and McLaughlin (2012)). A third party, called a clearing bank, facilitates the settlement of tri-party repos by transferring securities and cash from dealers to cash lenders such as money market funds, securities lenders, and other institutional funding providers. The market value of the securities posted as collateral customarily exceeds the amount of cash financing received from the repo counterparty by an amount called the “haircut.” A number of recent papers have focused on the issue of what determines the size of the haircuts that dealers face in the repo markets. Important examples of this literature include Gorton and Metrick (2012), Dang, Gorton, and Holmström (2013), Krishnamurthy, Nagel, and Orlov (2014), Eren (2014), Copeland, Martin, and Walker (2014),

and Infante (2019).

As discussed by Duffie and Liu (2001), Longstaff, Mithal, and Neis (2005), Blanco, Brennan, and Marsh (2005), and others, credit default swap (CDS) spreads reflect the market price of insuring against the default by the firm or entity underlying the CDS contract. This means that an increase in the cost of protecting against a default by the primary dealer maps directly into an increase in the primary dealer’s cost of capital. The dealer CDS spread has been used as a measure of intermediary capital constraints in a number of other studies including Gilchrist and Zakrajsek (2012) and Copeland, Martin, and Walker (2014). We obtain daily market prices for five-year CDS contracts for the dealers that are identified as primary dealers. The source of this CDS data is Markit. We also obtain CDS spreads for the issuers of the individual bonds in the sample from Markit. We use this information to test whether the credit risk of the issuer is related to the mispricing of the guaranteed corporate bonds.

## 2. Liquidity Measures

We compute the daily effective bid-ask spread of the  $i$ th bond as the volume-weighted price difference between trades in which the  $j$ th dealer sells and buys the same bond on a given day  $t$ , acting as a principal:

$$BA_{i,t} = \sum_j w_{j,t} (P_{i,j,t}^{sale} - P_{i,j,t}^{buy}), \quad (A1)$$

where  $w_{j,t}$  is the  $j$ th dealer’s share of the trading volume for the  $i$ th bond on day  $t$ , and  $P_{i,j}$  is the clean, volume-weighted price for which the  $j$ th dealer sells or buys the  $i$ th bond on day  $t$ . We include the prices of all principal transactions in which the dealer transacts with a non-dealer client. In a principal transaction the dealer trades with the client against his own inventory. By buying low and selling high, the dealer effectively earns a bid-ask spread, which compensates him for inventory costs, asymmetric information, and any other costs such as clearing and settlement (e.g., Glosten and Harris (1988)). In contrast, agency transactions are trades in which the dealer passes a bond on to the customer’s account from another dealer without taking on inventory risk. Agency transactions are not included because the dealer’s compensation consists of a fixed commission rather than a bid-ask spread. We also exclude interdealer trades because they typically involve much smaller price concessions than dealer-customer trades.

To capture the price impact of trades, we compute the Amihud (2002) illiquidity measure, defined as the average price change per one million dollars traded, and estimated for each transaction and averaged by trading day:

$$\text{Amihud}_{i,t} = \sum_k \frac{1,000,000}{N} \times \frac{P_{i,k} - P_{i,k-1}}{\text{Volume}_{i,k}}, \quad (A2)$$

where  $P_{i,k}$  is the price associated with  $k$ th transaction in the  $i$ th bond on day  $t$ , and  $N$  is the total number of transactions on that day. Similar to the effective bid-ask spread, the Amihud measure is based on dealer-customer trades.

### 3. The Correlation Structure of Mispricing

To examine whether mispricing correlations are greater when financial intermediaries are constrained, we compute pairwise correlations using data for the 2008–2009 and 2010–2012 periods separately. We note from Figure 1 of the paper that dealer CDS spreads were generally higher during the earlier part of the sample. Thus, financial intermediaries were likely more constrained during the 2008–2009 period. The average pairwise correlations for the 2008–2009 and 2010–2012 periods are 69.29 percent and 35.25 percent, respectively.

As another way of exploring the commonality in mispricing, we conduct a principal components analysis based on the correlation matrix of mispricing for the bonds. Since not every bond trades daily, we sample the data at a standardized weekly frequency and focus on the subset of bonds that have the broadest overlap with other bonds. In particular, we focus on the 44 bonds that have at least 44 observations in common with the other bonds in the subset. While this condition is necessary for the sample correlation matrix to be positive definite, it is not by itself sufficient since the individual pairwise correlations are generally based on observations with slightly different timing. As a result, several of the eigenvalues of the sample correlation matrix are slightly negative. We adjust the correlation matrix by setting these eigenvalues to small positive values. This technical numerical adjustment has only a very minor effect on the estimated correlation matrix. We then estimate the sample correlation matrix and perform a standard principal components analysis. Table IA-2 summarizes the results of this principal components analysis. The first principal component accounts for 57.10 percent of the total variance, and the second principal component explains an additional 14.26 percent. Thus, a significant component of the mispricing appears common across bonds used in the sample. However, extending the analysis to include as many as the first seven principal components still explains only 90 percent of the variance. This indicates that mispricing is also affected by factors that are specific to the individual bonds.

### 4. Estimating the Marginal State Income Tax Rate

Table IA-3 reports the results from the panel regression of the level of the unadjusted yield spreads described in Section 5 on the coupon rates of the bond.

As described in the Appendix, the coefficient for the coupon rate represents the marginal effect of state income taxes. The regression also includes monthly fixed effects and the time to maturity of the bond as controls. The standard errors are clustered by bond. As shown, the marginal state income tax rate is 1.655 percent.

## 5. Instrumental Variables Tests

The discussion in Section 8.1 of the paper provides results for a test of whether haircuts and CDS spreads affect mispricing only through the inventory channel. Here we briefly describe the econometric test used to make this conclusion. In instrumental variable regressions, the test of overidentifying restrictions can be used to examine the question of whether the excluded instruments (the instrumental variables for the potentially endogenous regressor which, in the typical two-stage least squares model of IV regression are included in the first-stage regression but excluded from the second-stage regression) are “appropriately excluded.” This notion of appropriate exclusion is precisely what we would like to investigate. An instrument satisfies the exclusion restriction when its effect on the dependent variable in the regression can *only* occur through the potentially endogenous independent variable for which it is being used as an instrument. This is part of the two-part test for whether instruments are valid. The first part, instrument relevance, is easy to check empirically by looking for strong significance in the first-stage  $F$  statistic, which confirms whether or not the instruments covary with the endogenous regressor for which they are meant to instrument. The second part, instrument exogeneity, includes the component of the exclusion restriction. This part is able to be tested using the Hansen  $J$  statistic, the test we perform here. Importantly, the test is conditional. It is a test where, under the null hypothesis, we are proposing that conditional on at least one of the instruments being appropriately excluded, all of the excluded instruments are appropriately excluded. For exactly identified models with a single endogenous regressor and a single excluded instrument, the  $J$  statistic is zero and the test has no meaning.

Table IA-4 shows the results of the test we run to reach the conclusion discussed in the paper. The first column of the table shows the result of a regression of mispricing on inventory where we use non-TLGP inventory changes as the sole excluded instrument for changes in TLGP inventory. Here, we make a purely intuition-based appeal for the exclusion restriction insofar as we cannot see a mechanism by which the change in non-TLGP inventory could possibly have an effect on the mispricing of TLGP bonds except through correlation between the inventory level of TLGP and non-TLGP bonds. That is, the only way the holdings of corporate bonds more generally can affect the mispricing of the TLGP bonds would be to the extent that changes in those holdings can be helpful in describing how changes in holdings of TLGP bonds themselves affect the prices of



those bonds. This gives us a strong grip however, to test for the appropriateness of excluding other variables. Because the non-TLGP holdings are relevant ( $F$  statistic of 28.14) and intuitively meeting the exclusion restriction, we can look at the other variables in Table 5 of the main text and ask: do these series, which we can see help explain changes in inventory, affect mispricing only through the inventory channel? Table IA-4 shows the results of six additional versions of the same regression. In each case, we investigate adding explanatory variables from Table 5 and look to see if we can conclude that they are appropriately excluded instruments and therefore that the effects of these variables on mispricing occur only through the inventory channel. Because the table shows the second-stage regression, the only substantial differences in the table are in the list of excluded instruments, and the statistics about the first stage shown toward the bottom of the table. By showing the second-stage regression we can see that the results for the impact of inventory changes on mispricing do not vary much with these changes.

The second column of Table IA-4 shows the results of what is referred to as the baseline, which uses the excluded instruments used in the exercise described in Section 8.1. This includes non-TLGP inventory, and the first three lags of TLGP inventory, which were used in Table 5 of the paper. From the statistics toward the bottom of the table, we can see that these instruments are both relevant ( $F$  statistic of 10.27) and appropriately excluded ( $J$  statistic of 7.2, which cannot be rejected as being drawn from a chi-squared distribution with three degrees of freedom at the five-percent level). From the baseline, we go on to examine specifications which include CDS and haircuts, both contemporaneously and lagged, one at a time (columns 3 through 6) and then all together (column 7). In each regression we are looking for the resulting  $J$  statistic, and the  $p$ -value showing the probability that the test statistic value was drawn from the appropriate distribution, meaning the distribution from which the statistic should be drawn under the null hypothesis that if one of the instruments was correctly excluded, all of them were correctly excluded—which, again, would mean that each variables effects on mispricing would be occurring only through the inventory channel. Because we can add a single variable at a time and re-run the test, columns 3 through 6 test contemporaneous and lagged CDS and haircuts individually. In each of these cases, we see that large  $J$  statistics occur in regressions when we add these variables to the list of excluded instruments. Contemporaneous CDS, when added to the list of excluded variables, creates a  $J$  statistic of 23.01, while for contemporaneous CDS we get a  $J$  statistic of 21.76. From the table we can see that whether we look at them individually as in columns 3 through 6, or jointly as in 7, it appears that we can conclusively reject the hypothesis that CDS and haircuts affect mispricing exclusively through the inventory channel.

## 6. Identifying the Source of Identification in the Panel Regression

To understand better the role of the individual explanatory variables in the panel regression reported in Table 3, we estimate two alternative specifications. The first includes bond fixed effects into the panel regression framework and can be viewed as a purely time series version of the regression. In doing this, however, it is important to recognize that some of the explanatory variables in Table 3 such as the coupon rate, issue size, etc. are bond specific. As a result, these variables are almost perfectly collinear with the bond fixed effects. For example, the regression of the coupon rate on the bond fixed effects has an  $R^2$  of 0.99993; the regression of bond duration on the bond fixed effects has an  $R^2$  of 0.99999; the regression of issue size on the bond fixed effects has an  $R^2$  of 0.99962, etc. In light of this, the alternative specification with bond fixed effects includes only variables that are not collinear with these fixed effects.

Table IA-5 reports the results from this alternative specification. As shown, the dealer CDS and dealer haircut variables are positive and significant, while dealer centrality and the dealer share of volume are negative and significant.

In the second specification, we estimate the panel regression using a standard two-stage Fama and MacBeth (1973) approach. This specification can be viewed as providing a purely cross-sectional perspective. As shown in Table IA-6 which reports the estimation results, the duration, dealer haircut, and dealer centrality variables are significant.

Taken together, the results from these two tables, in conjunction with those in Table 3, suggest that the effects of dealer CDS, dealer haircuts, dealer centrality, and dealer share of volume are identified via time series variation, the effects of duration, dealer haircuts, and dealer centrality are identified via the cross-section, and the effects of the number of dealers are identified jointly via time series variation and the cross-section.

## INTERNET APPENDIX REFERENCES

- Amihud, Y., 2002. Illiquidity and stock returns: Cross-section and time-series effects. *Journal of Financial Markets* 5, 31-56.
- Blanco, R., Brennan, A., Marsh, I. W., 2005. An empirical analysis of the dynamic relation between investment-grade bonds and credit default swaps. *Journal of Finance* 60, 2255-2281.
- Brunnermeier, M., Pedersen, L. H., 2009. Market liquidity and funding liquidity. *Review of Financial Studies* 22, 2201-2238.
- Copeland, A., Duffie, D., Martin, A., McLaughlin, S., 2012. Key mechanics of the U.S. tri-party repo market. *FRBNY Economic Policy Review* 18, 17-28.
- Copeland, A., Martin, A., Walker, M., 2014. Repo runs: Evidence from the tri-party repo market. *Journal of Finance* 69, 2343-2380.
- Dang, T. V., Gorton, G., Holmström, B., 2013. Haircuts and repo chains. Working paper, Yale University.
- Duffie, D., Liu, J., 2001. Floating-fixed credit spreads. *Financial Analysts Journal* 57, 73-87.
- Eren, E., 2014. Intermediary funding liquidity and rehypothecation as a determinant of repo haircuts and interest rates. Working paper, Stanford University.
- Fama, E. F., MacBeth, J. D., 1973. Risk, return, and equilibrium: Empirical tests. *Journal of Political Economy*, 81 607-636.
- Gilchrist, S., Zakrajsek, E., 2012. Credit spreads and business cycle fluctuations. *American Economic Review* 102, 1692-1720.
- Glosten, L. R., Harris, L. E., 1988. Estimating the components of the bid/ask spread. *Journal of Financial Economics* 21, 123-142.
- Goldstein, M. A., Hotchkiss, E. S., Sirri, E. R., 2007. Transparency and liquidity: A controlled experiment on corporate bonds. *Review of Financial Studies* 20, 235-273.
- Gorton, G., Metrick, A., 2012. Securitized banking and the run on repo. *Journal of Financial Economics* 104, 425-451.
- Infante, S., 2019. Liquidity windfall: The consequences of repo rehypothecation. *Journal of Financial Economics* 133, 42-63.

Krishnamurthy, A., Nagel, S., Orlov, D., 2014. Sizing up repo. *Journal of Finance* 69, 2381-2417.

Longstaff, F. A., Mithal, S., Neis, E., 2005. Corporate yield spreads: Default risk or liquidity? New evidence from the credit default swap market. *Journal of Finance* 60, 2213-2253.

Newey, W. K., West, K. D., 1987. A simple positive semi-definite heteroskedasticity and autocorrelation consistent covariance matrix, *Econometrica* 55, 703-708.

**Table IA-1**

**Summary Statistics for the Inventory Holdings of Primary Dealers.** This table presents summary statistics for the inventory holdings of the 12 dealers identified as primary dealers. Number of bonds denotes the number of different bonds held in the dealer's inventory at some point during the sample period. Average, Median, and Standard Deviation denote the summary statistics taken across bonds of the dealer's inventory holdings as a percentage of total primary dealers' inventory holdings.

Dealer	Number of Bonds	Average	Median	Standard Deviation
1	60	11.36	8.62	10.29
2	60	10.62	0.41	18.44
3	60	10.22	6.78	10.61
4	59	6.17	3.52	6.97
5	60	9.67	7.29	10.38
6	61	26.68	25.28	15.25
7	61	11.26	9.61	6.28
8	58	3.89	2.85	3.37
9	61	5.58	3.39	8.33
10	58	1.91	0.69	2.96
11	57	2.28	1.72	2.79
12	46	0.36	0.09	0.50

**Table IA-2**

**Commonality in Mispricing.** This table presents the results from a principal components analysis of the correlation matrix of mispricing for a subset of 44 bonds. The subset consists of the bonds with more than 44 common observations with every other bond in the subset. Percentage denotes the percentage of total variation explained by the indicated principal component. Cumulative denotes the cumulative percentage of total variation explained using the indicated number of principal components. The correlations are based on weekly data from December 2008 to June 2012.

Principal Component	Percentage	Cumulative
1	57.10	57.10
2	14.26	71.36
3	7.20	78.56
4	4.42	82.98
5	3.62	86.60
6	2.04	88.64
7	1.39	90.03

Table IA-3

**Cross-Sectional Regression Estimating the Marginal State Income Tax Rate.** This table reports the results from a time-series panel regression of the unadjusted yield spreads described in Section 5 on the coupon rate of the bonds with controls for time to maturity and monthly fixed effects. Yield spreads are measured in basis points. Coupon rates are expressed as percentages. Time to maturity is measured in years. The *t*-statistics are based on robust standard errors clustered by bond. The superscripts \* and \*\* denote significance at the ten-percent and five-percent levels, respectively. The data are monthly from December 2008 to June 2012.

Variable	Coefficient	<i>t</i> -Stat
Coupon Rate	1.655	3.95**
Time to Maturity	10.286	11.04**
Monthly Fixed Effects		Yes
$R^2$		0.849
Number of Observations		1,646

Table IA-4

**Tests of Exclusion Restrictions for CDS and Haircuts as Instruments for Inventory.** This table reports the results from an instrumental variables regression of mispricing on changes in inventory. The specifications are differentiated only by the alternative sets of instrumental variables for changes in inventory. The main two rows of results in the table show the IV regression coefficients which are largely the same across the specifications. The final eight rows of the table contain the information about which variables are used as excluded instruments for change in inventory. The three rows directly above the final eight rows give statistics about the quality of the instrument choices in each specification. The first stage  $F$  statistic describes the quality of the fit of the instruments given in the final eight rows with changes in inventory. Under the null hypothesis that **all** of the instruments are appropriately excluded, the Hansen  $J$  statistic should be distributed chi-squared with degrees of freedom  $(K - 1)$ , where  $K$  is the number of excluded instruments show in the final eight rows of the table (e.g., for the baseline specification  $K = 4$ , and thus the  $J$  statistic should be chi-squared with three degrees of freedom). The  $J$  statistic  $p$ -value shows the probability that a value as large as the corresponding  $J$  statistic under that specification was drawn from the chi-squared distribution specified by the null hypothesis. The  $t$ -statistics are based on robust standard errors clustered by bond. The superscripts \* and \*\* denote significance at the ten-percent and five-percent levels, respectively. The sample is monthly from December 2008 to June 2012.

Variable	Single Excluded Instrument	Baseline	Baseline + CDS <sub><i>t</i></sub>	Baseline + Haircut <sub><i>t</i></sub>	Baseline + CDS <sub><i>t-1</i></sub>	Baseline + Haircut <sub><i>t-1</i></sub>	Baseline + All Four
Intercept	-1.9662** (-9.55)	-1.7930** (-13.68)	-1.7749** (-13.51)	-1.7817** (-13.58)	-1.8140** (-13.82)	-1.7863** (-13.61)	-1.7870** (-13.73)
Δ Inventory	-1.1409** (-2.94)	-0.5358** (-2.39)	-0.6265** (-2.98)	-0.5922** (-2.81)	-0.4304** (-1.82)	-0.5693** (-2.65)	-0.5659** (-2.75)
<i>N</i>	1,646	1,451	1,451	1,451	1,451	1,451	1,451
First Stage <i>F</i>	28.14	10.27	8.24	10.13	8.61	9.96	7.59
Hansen <i>J</i> Stat	0.000	7.20	23.01	21.76	20.02	12.46	30.75
<i>J</i> Stat <i>p</i> -Value	NA	0.0659	0.0001	0.0002	0.0005	0.0142	0.0001
Excl Inst 1	Non-TLGP Inv	Non-TLGP Inv	Non-TLGP Inv	Non-TLGP Inv	Non-TLGP Inv	Non-TLGP Inv	Non-TLGP Inv
Excl Inst 2		TLGP Inv <sub><i>t-1</i></sub>	TLGP Inv <sub><i>t-1</i></sub>	TLGP Inv <sub><i>t-1</i></sub>	TLGP Inv <sub><i>t-1</i></sub>	TLGP Inv <sub><i>t-1</i></sub>	TLGP Inv <sub><i>t-1</i></sub>
Excl Inst 3		TLGP Inv <sub><i>t-2</i></sub>	TLGP Inv <sub><i>t-2</i></sub>	TLGP Inv <sub><i>t-2</i></sub>	TLGP Inv <sub><i>t-2</i></sub>	TLGP Inv <sub><i>t-2</i></sub>	TLGP Inv <sub><i>t-2</i></sub>
Excl Inst 4		TLGP Inv <sub><i>t-3</i></sub>	TLGP Inv <sub><i>t-3</i></sub>	TLGP Inv <sub><i>t-3</i></sub>	TLGP Inv <sub><i>t-3</i></sub>	TLGP Inv <sub><i>t-3</i></sub>	TLGP Inv <sub><i>t-3</i></sub>
Excl Inst 5			CDS <sub><i>t</i></sub>	Haircut <sub><i>t</i></sub>	CDS <sub><i>t-1</i></sub>	Haircut <sub><i>t-1</i></sub>	CDS <sub><i>t</i></sub>
Excl Inst 6							Haircut <sub><i>t</i></sub>
Excl Inst 7							CDS <sub><i>t-1</i></sub>
Excl Inst 8							Haircut <sub><i>t-1</i></sub>



**Table IA-5**

**Panel Regression Including Bond and Monthly Fixed Effects.** This table reports the results from the panel regressions mispricing on the indicated variables. Mispricing is measured in basis points. Issuer and dealer CDS spreads are measured in basis points. Dealer haircut is expressed as a percentage. Number of dealers denotes the number of dealers executing trades in the bond during the month. Number of institutions denotes the number of financial institutions holding positions in the bond as of the end of the month. Dealer centrality denotes the fraction of total dealer inventory held by the primary dealer for the bond. Dealer share of volume denotes the trading volume of dealers divided by total trading volume. Age is expressed in years. Bid-ask spread is measured in cents per 100 dollar par amount. The  $t$ -statistics are based on robust standard errors clustered by bond. The superscripts \* and \*\* denote significance at the ten-percent and five-percent levels, respectively. The sample is monthly from December 2008 to June 2012.

Category	Variable	Coeff.	$t$ -Stat
Control	Issuer CDS	0.4591	0.94
Intermediary	Dealer CDS	0.0349	3.20**
	Dealer Haircut	1.3467	2.04*
Network	Number of Dealers	-0.0671	-1.03
	Number of Institutions	-0.0087	-0.30
	Dealer Centrality	-4.8020	-3.06**
	Dealer Share of Volume	-2.4231	-2.10**
Liquidity	Bid-Ask Spread	-3.0690	-0.39
	Amihud Measure	0.3076	0.79
Bond Fixed Effects			Yes
Monthly Fixed Effects			Yes
Adj. $R^2$			0.880
Number of Observations			1,727

Table IA-6

**Fama-Macbeth Estimation of the Panel Regression.** This table reports the results from the two-stage Fama-MacBeth regressions of mispricing on the indicated variables. Mispricing is measured in basis points. Coupon is expressed as a percentage. Issuer and dealer CDS spreads are measured in basis points. Duration is measured in years. Dealer haircut is expressed as a percentage. Number of dealers denotes the number of dealers executing trades in the bond during the month. Number of institutions denotes the number of financial institutions holding positions in the bond as of the end of the month. Dealer centrality denotes the fraction of total dealer inventory held by the primary dealer for the bond. Dealer share of volume denotes the trading volume of dealers divided by total trading volume. Age is expressed in years. Issue size denotes the logarithm of the total par amount of the bond outstanding expressed in billions of dollars. Bid-ask spread is measured in cents per 100 dollar par amount. The  $t$ -statistics are based on Newey-West (1987) standard errors (four lags). The superscripts \* and \*\* denote significance at the ten-percent and five-percent levels, respectively. The sample is monthly from December 2008 to June 2012.

Category	Variable	Coeff.	$t$ -Stat
Controls	Constant	6.2648	0.71
	Coupon	0.7931	0.57
	Issuer CDS	0.0055	1.61
Price Risk	Duration	7.9604	5.69**
Intermediary	Dealer CDS	-0.0062	-0.28
	Dealer Haircut	2.3319	3.74**
Network	Number of Dealers	-0.0365	-0.69
	Number of Institutions	0.0026	0.11
	Dealer Centrality	-4.2246	-1.74*
	Dealer Share of Volume	-2.9294	-1.18
Liquidity	Age	-27.3751	-1.04
	Issue Size	-0.7971	-1.54
	Bid-Ask Spread	2.3356	0.44
	Amihud Measure	0.2862	0.32
Average $R^2$			0.689
Number of Observations			1,727